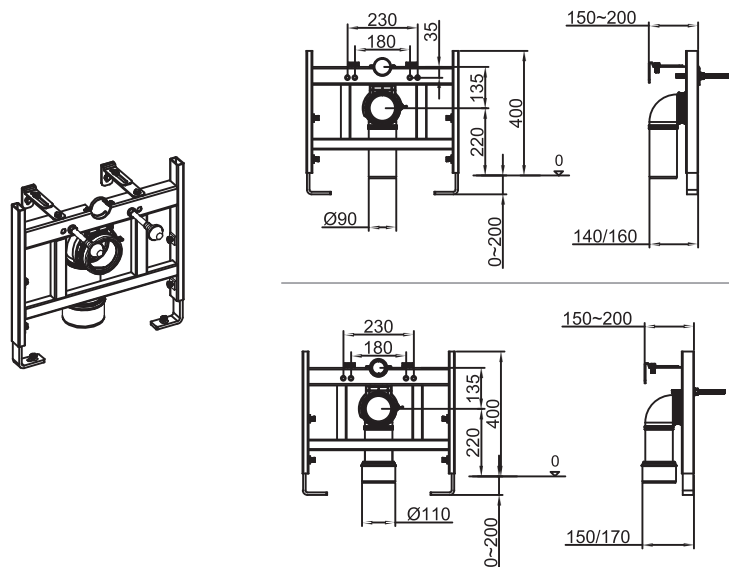
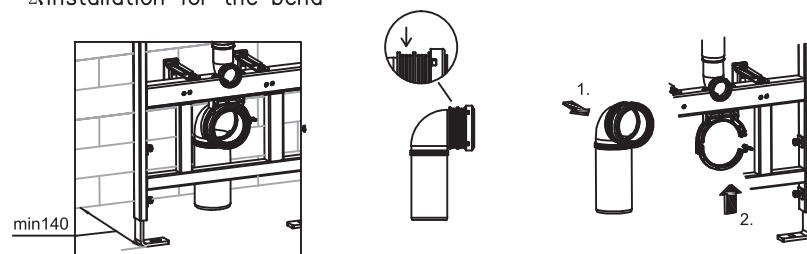


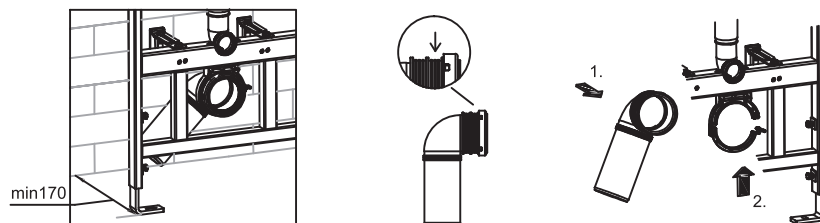
1. Drawing



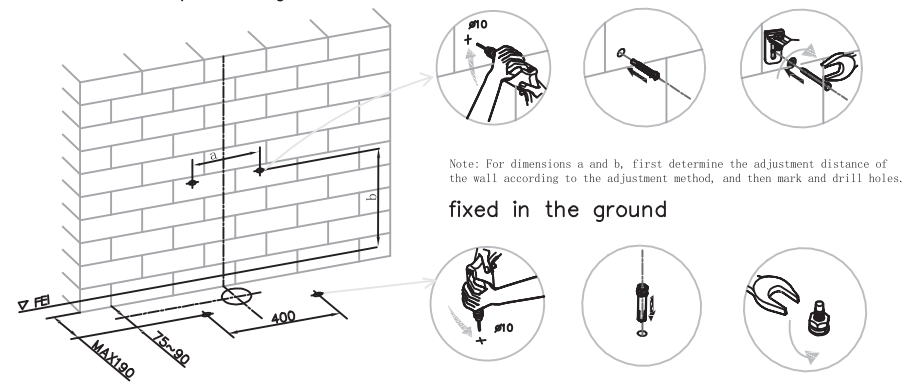
2. Installation for the bend



Fix the flush bend straightly



Fix the flush bend askew

3. Installation for the frame:
a. Line positioning

fixed in the wall

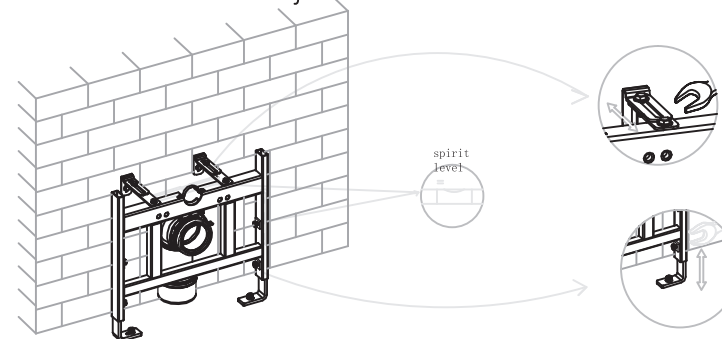


Note: For dimensions a and b, first determine the adjustment distance of the wall according to the adjustment method, and then mark and drill holes.

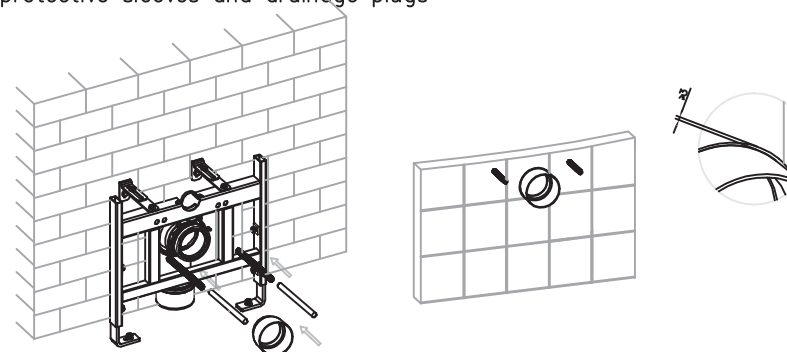
fixed in the ground



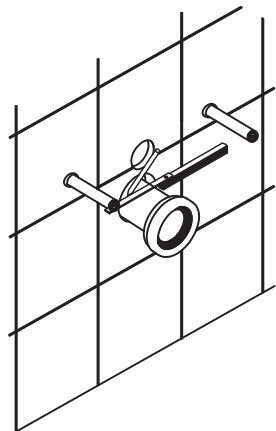
b. Frame flatness adjustment



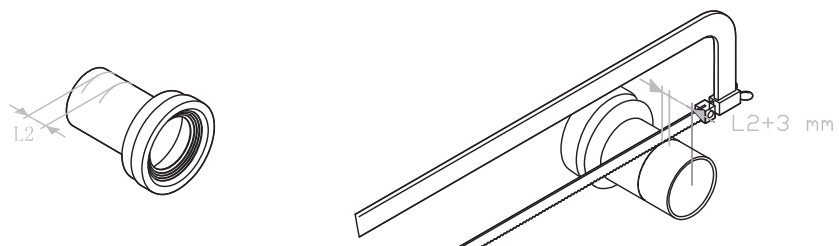
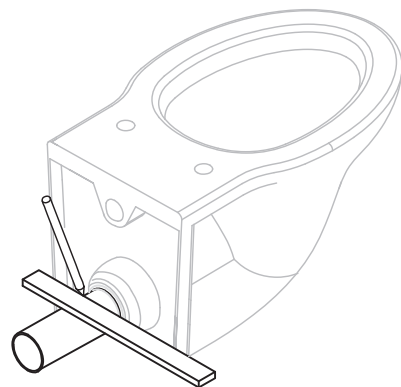
4. Installation of connecting bolts, bolt protective sleeves and drainage plugs



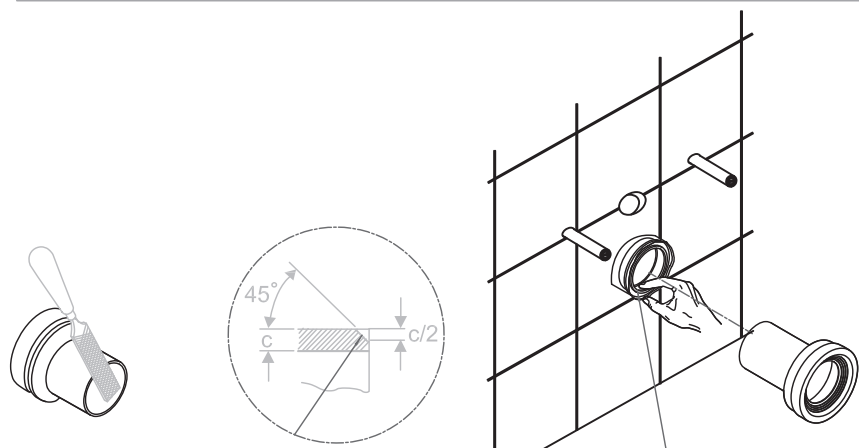
5.Toilet installation:



a,Line marking for straight drainage pipes

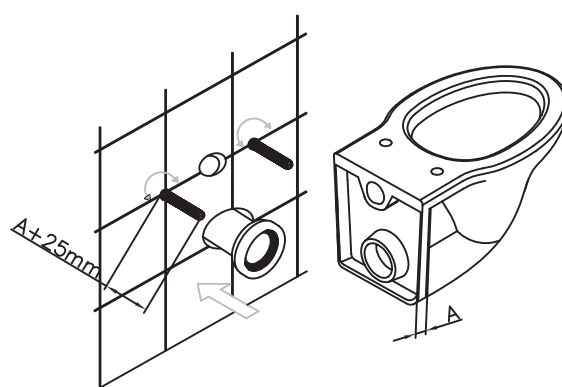
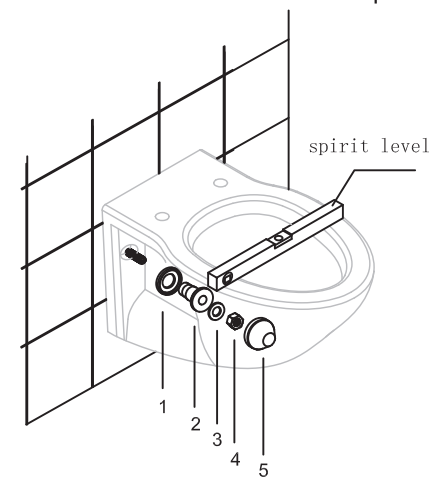


b,Cutting of straight drainage pipes

End surface grinding and chamfering
c.Repair of straight drainage pipes

Apply lubricant

6.Toilet installation

After removing the bolt protective cover,
adjust the exposed length of the bolt;Lock the nut and install the decorative cap,
Make sure the toilet is level.

7.Spare parts list

