

PHOENIX

THE RETAIL BRAND

TECHNICAL DATA SHEET

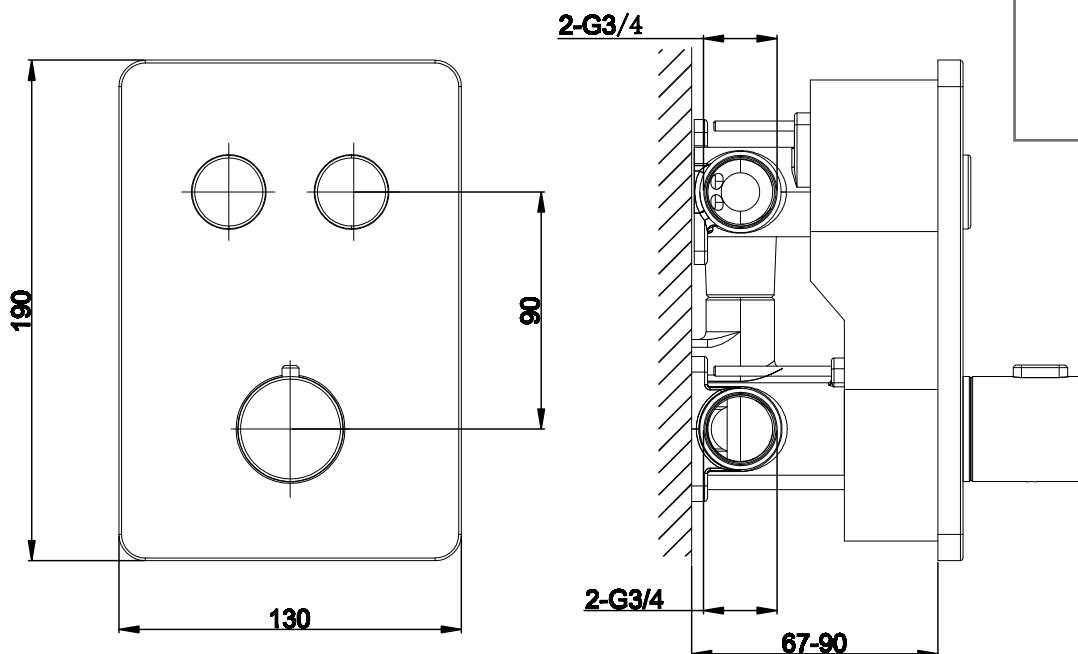
Range: Shower Valves

Type: Concealed Thermostatic Shower Valves

Code: SV141 SV151 SV161 SV171 SV181 SV132 SV122

Version/Date: v1 12/23

Various handle styles available.

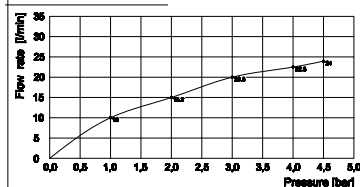


Finishes:

Information:

High Pressure. Vernet Cartridge. Please be aware that if this valve is being installed with a pump, a negative head version is required to ensure the flow switches detect the valve being turned on.

FLOW RATE CURVES



Guarantee/Aftercare: During installation extra care must be taken to avoid damaging the fittings. We provide a guarantee against faulty manufacture or materials (excluding serviceable parts), providing they have been installed, cared for and used in accordance with our instructions and good plumbing practice. All products installed in a commercial environment carry a 12 month guarantee. We cannot be held responsible for the use of incorrect dimensions shown for first fix without the actual products on site.

In line with the CE standards for this type of product, there may be a manufacturers tolerance of approximately +/- 2% on the overall dimensions and finish on these products. As per our terms and conditions of guarantee, we cannot be held responsible for the use of dimensions shown for first fix without the actual products on site. All dimensions stated are nominal and are subject to manufacturing tolerances.

Phoenix Whirlpools Ltd. Unit 8, Leeds 27 Industrial Estate, Bruntcliffe Ave. Morley, Leeds LS27 0LL

Tel: 0113 201 2260 Email: sales@phoenix-uk.com Web: www.phoenix-uk.com

Notes: Drawings may not be to scale. All dimensions in mm unless otherwise stated. Information correct at time of printing but subject to change at any time.