

Thank you for purchasing this bathroom furniture.

All product guarantees are subject to the following terms and conditions. The product has been fitted/installed in accordance with the appropriate fitting instructions. The product has been maintained and cared for in accordance with the instructions, including regular and appropriate cleaning. If the product has been modified, misused, neglected, wilfully or accidentally damaged then the product guarantee is invalid.

The guarantee only covers the material structure and not moving parts that perish due to fair wear & tear. In the event of a guarantee claim, the liability of the company is limited to the product supplied and does not extend to consequential loss or damage arising from defective product. The guarantee applies to the original purchaser ONLY and is not transferable. This guarantee does not affect your statutory rights and is applicable in the UK and Republic of Ireland.

Care & attention of your product:

All furniture and worktops should be dried after every use, taking special notice to edges of drawers, doors & worktops. Water left on the surface of furniture will eventually find its way into the core.

Sealant lines should be periodically checked for signs of failure and any failures must be removed immediately and resealed.

We recommend cleaning your product once a week, using only a moist soapy cloth, this then needs to be dried off using a paper towel or dry cloth.

Using bleach based substances on your furniture, toilet seats, gel cast basins or worktops, will damage your product and this will affect your guarantee.

Soft close toilet seats should not be forced down as this practice could cause the soft close mechanism to fail.

Important note:

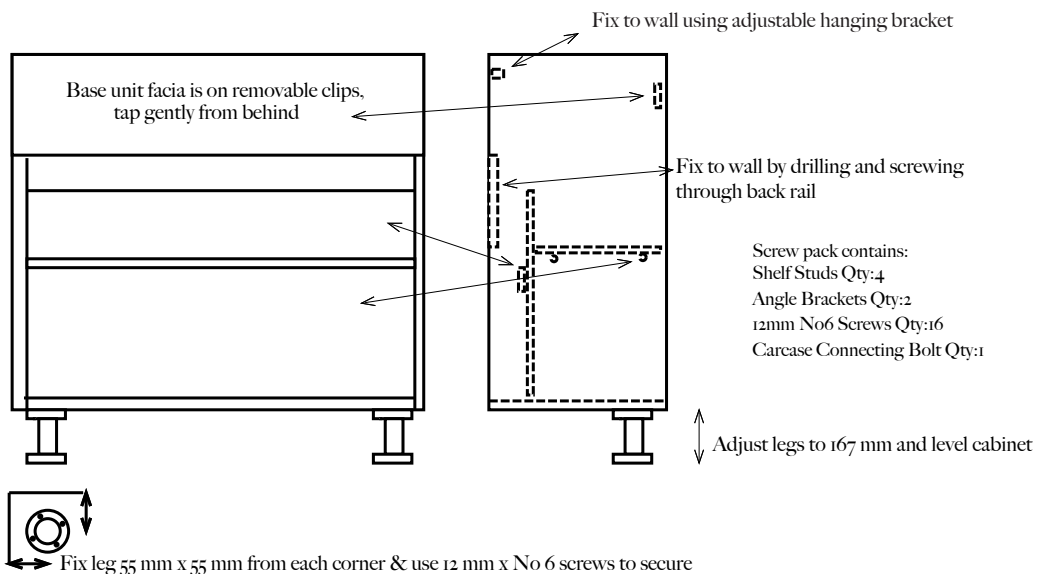
Any furniture that is drilled or cut will not be guaranteed against water ingress or delamination.

Before starting, please ensure you are working on a flat level area with no surface debris that could damage your new bathroom furniture.

Wall/Floor Mounted Cabinets

Fitting Instructions

Removal of doors, drawers, facias, shelves and backs (for basin housings only) is advisable before fitting Basin Housing/Base cabinets.

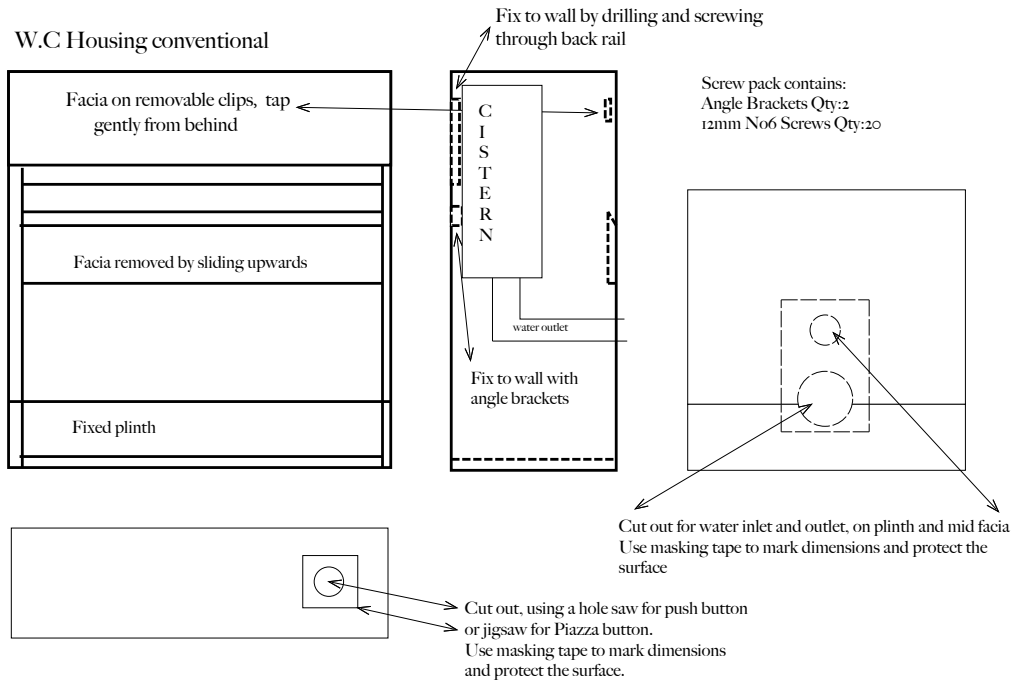


Fitting Instructions

W.C.Housing

Removal of Facia's is advisable before fitting.

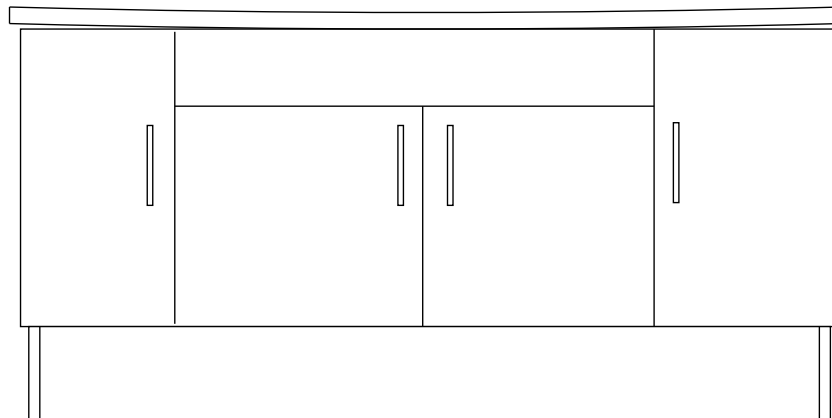
W.C Housing conventional



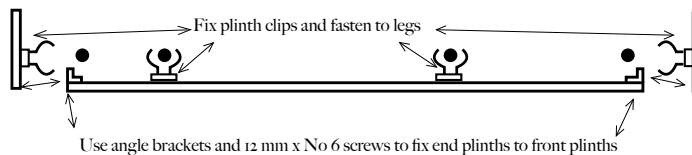
Fitting Instructions

Worktops & Solid Surface

Due to the high pressure laminates and solid surface substrates we use to give your worktops the maximum protection against moisture ingress, the worktops can be slightly bowed. Any slight bow will flatten when installed. Apply a high grade sealant to adhere the worktops to the units. Place a weight on the worktop for 6-8 hours to allow the sealant to cure.



Base Plinths



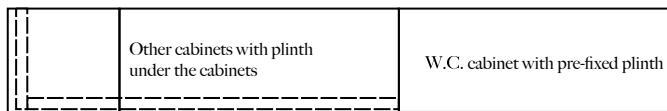
Pack contains:

Angle Brackets Qty:2
12mm No6 Screws Qty:20

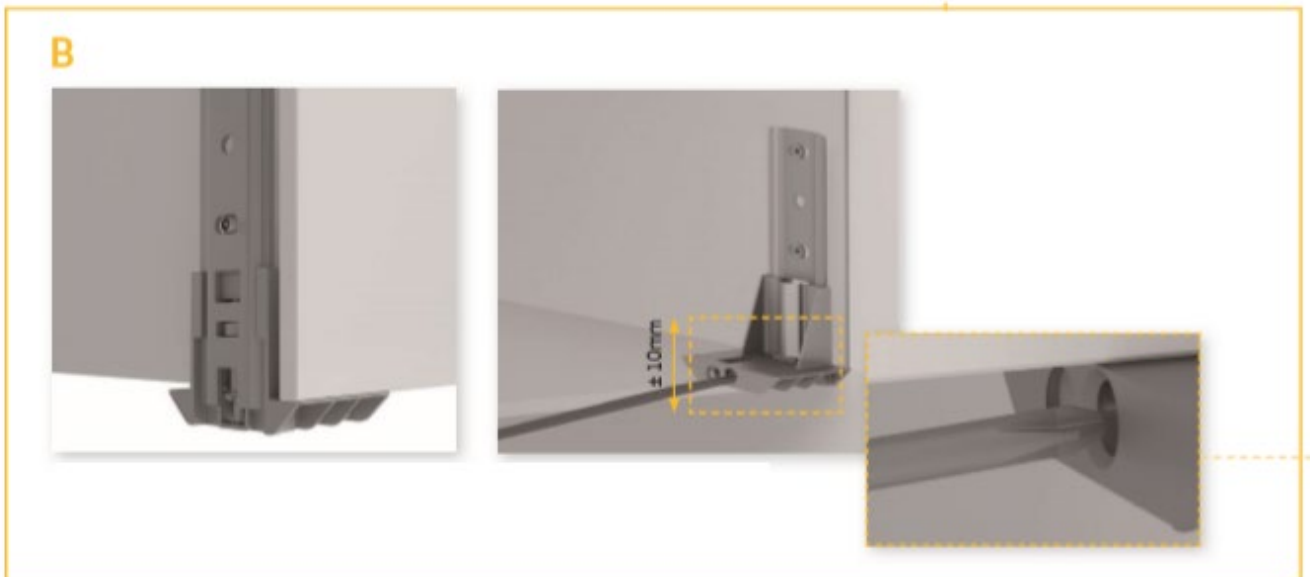
End plinth screw pack contains:

Length of seal strip Qty:1
Angle brackets Qty:2
12 mm x No 6 screws Qty:8

Please note: W.C Cabinets come with pre-fixed plinth, front plinths then butt up to the end of the W.C cabinet

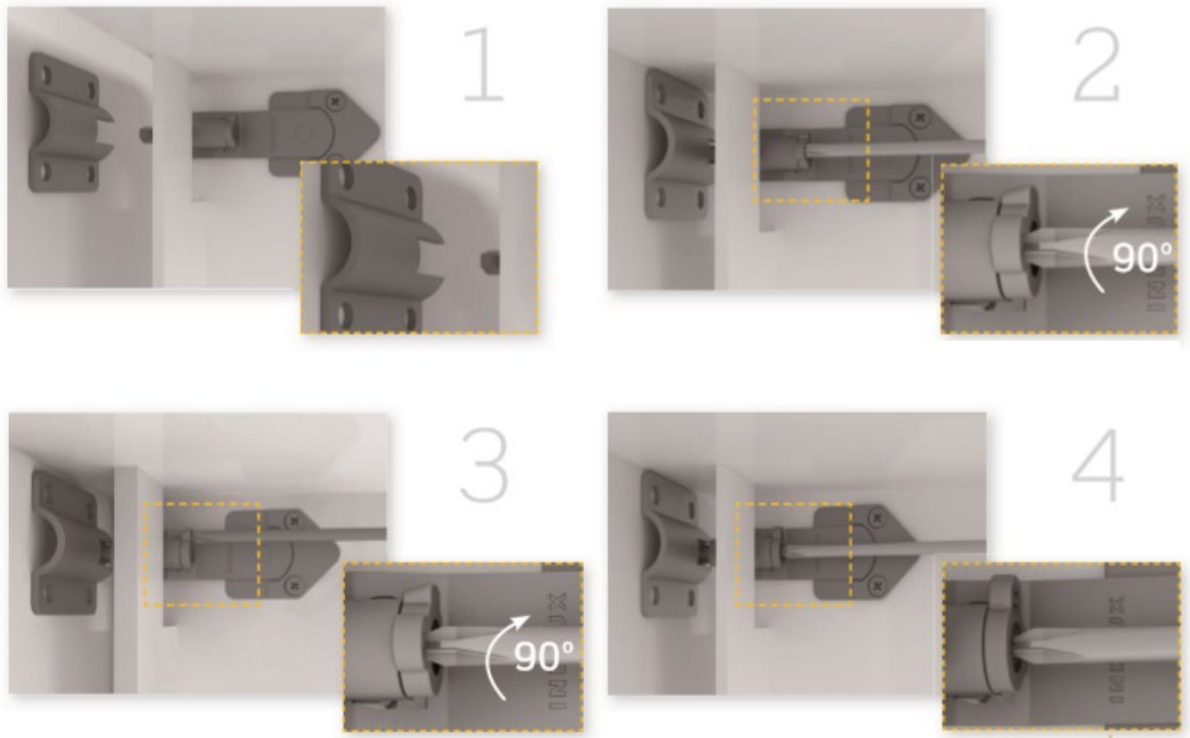


Identity Bracket Assembly

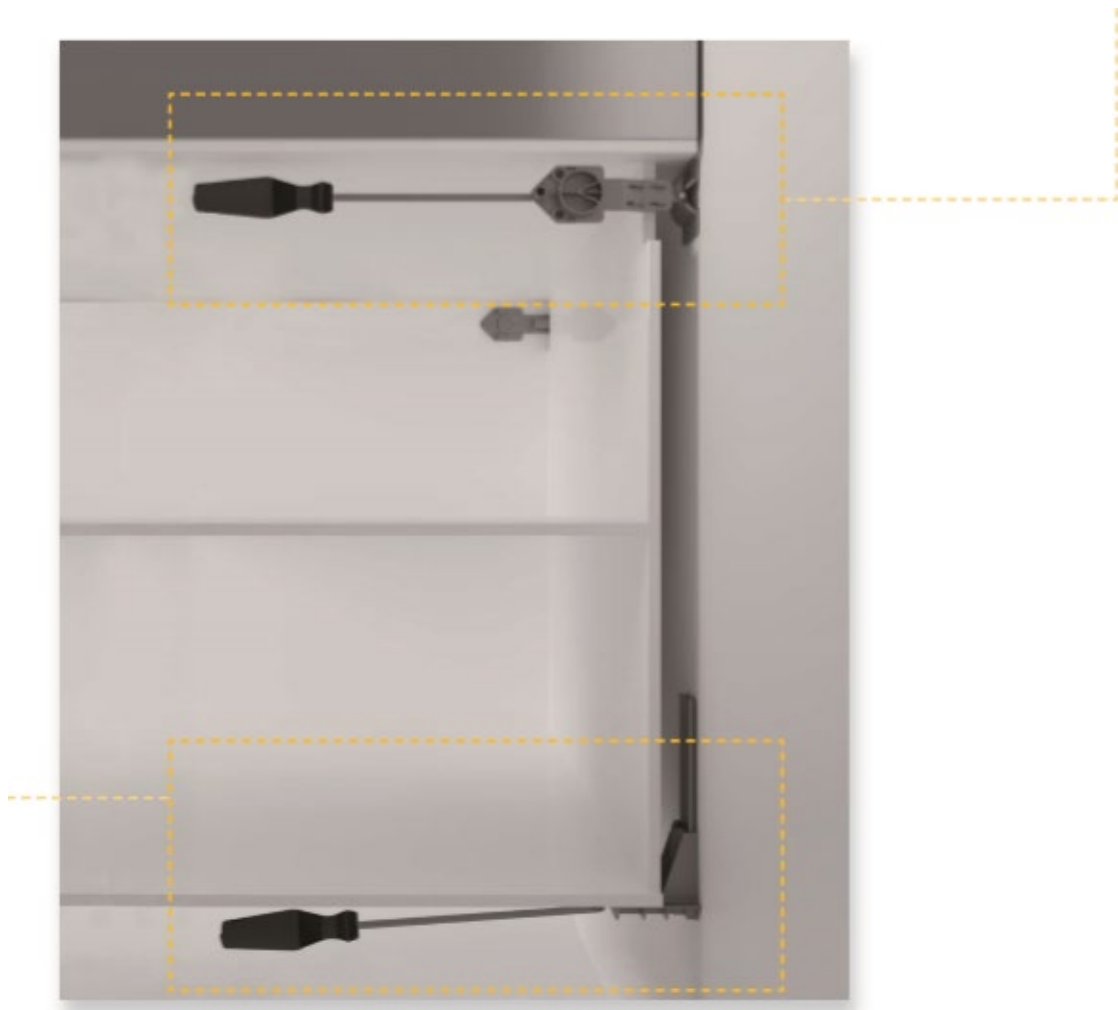


No previous machining of the module required before fixing the lower support

Identity Bracket Assembly



Turn 90 degrees to lock the fitting



CUSTOMER INFORMATION

The ceramic waste cover for the basin can only be used as a free flow waste. Remove the plug on your klik waste when installing.

Leave this cover off if you require the use of a klik waste on your basin.