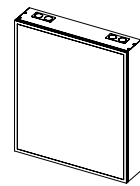
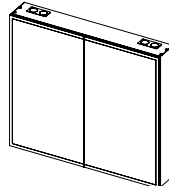


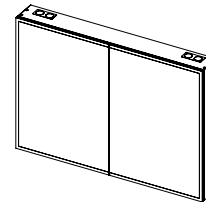
ILLUMINATED CABINET INSTALLATION INSTRUCTIONS



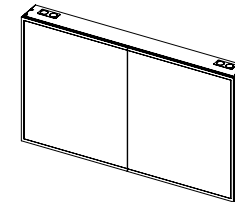
MI050



MI149



MI150



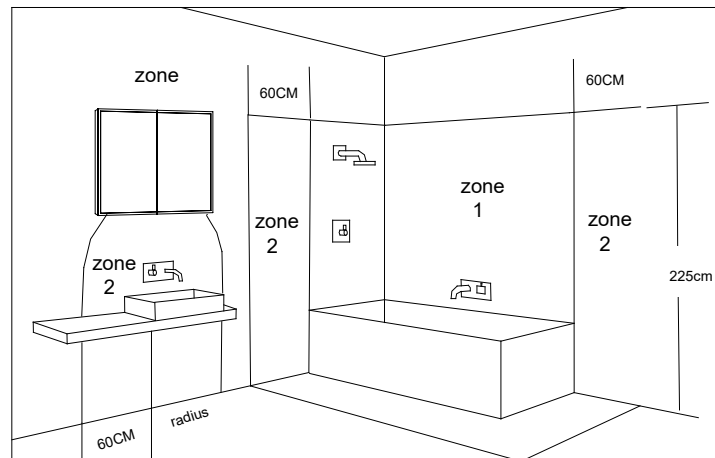
MI257

Please read these instructions carefully before installation.
Installation should be carried out by a qualified electrician.
Please leave a copy for the user/maintenance engineer for future reference.

GENERAL

- **THIS PRODUCT MUST BE EARTHED. IF THERE ARE ONLY TWO WIRES COMING FROM YOUR POWER SUPPLY IT MEANS THAT THIS FITTING BE WIRED TO AN UNEARTHED CIRCUIT. CONTACT A QUALIFIED ELECTRICIAN TO INSTALL A SUITABLE EARTH FACILITY.**
- **ENSURE ELECTRICITY IS SWITCHED OFF AT THE MAINS BEFORE INSTALLING OF MAINTAINING ANY ELECTRICAL PRODUCT.**
- **THIS PRODUCT IS FOR IN DOOR USE ONLY.**
- **THIS PRODUCT IS IP44 RATED AND SHOULD BE INSTALLED ONLY.**
- **IN THE ZONE 2 AND 3 OF THE BATHROOM AS DEFINED BY THE IEE WIRING REGULATIONS (SEE DIAGRAM BELOW)**
- **REPLACE FAILED LAMPS IMMEDIATELY. ALLOW THE GLASS, LAMP AND FITTING TO COOL BEFORE REPLACING THE LAMP.**

IEE Bathrom Zones Diagram



OUTSIDE ZONES

IMPORTANT

- When working at heights, please use a suitable platform to work from.
- **Please note:** For new installations, check for any electrical cables or pipe work (gas/water) in the vicinity of the intended mounting point for the product, before proceeding with the installation.
- Ensure that the fixing location is able to take the weight of the complete fitting. Wear suitable eye protection when drilling. Be careful when using power tools near water.

Do NOT strike mirror glass with hard or pointed items. It is recommended that the product is cleaned with a soft, dry, non abrasive cloth. Do NOT use cleaning agents or abrasive materials on any type of finished surface. Do NOT allow moisture to come into contact with the electrical components.

Compliance

This product complies with the following safety standards:
BS EN 60598-1: 2008+A11: 2009. EN60598-2-1: 1989

Wiring

This product is manufactured to class I category and requires an earth connection

COLOUR CODING

- L - Live = Brown
- N - Neutral = Blue
- ⊕ - Earth = Green & Yellow

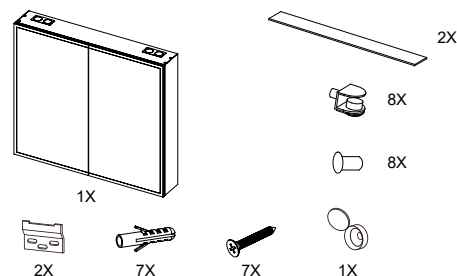
Tube Type

Model	Led Parameter	Led Drive
MI050	279 Leds / 0.075W / 6400K	30W
MI149	159x2 Leds / 0.075W / 6400K	60W
MI150	183x2 Leds / 0.075W / 6400K	60W
MI257	210x2 Leds / 0.075W / 6400K	60W

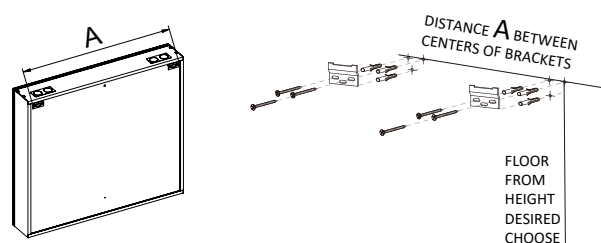
ILLUMINATED CABINET INSTALLATION INSTRUCTIONS

Installation procedure

1. Open the carton and make sure all the parts listed below are present

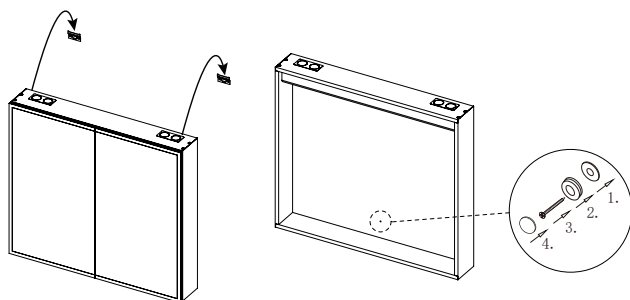


2. Mark a desired height of the mirror and draw a horizontal line on the wall which corresponds with the height of the cabinet hangers. Drill the required holes and insert the wall plugs. Note: Wall plugs supplied are only suitable for solid stone/brick walls. Then screw the brackets to the wall using the screws provided. Please ensure the screws are fully tight.



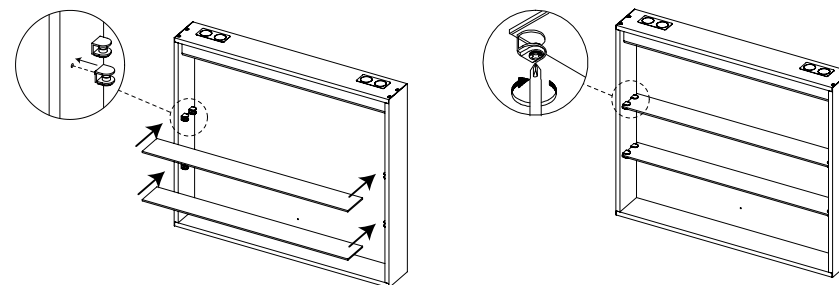
3. Make the electrical connections, make sure to turn off the electrical supply at the mains. Connection must be made in accordance with the latest IEE regulations. This cabinet is manufactured to Class I and requires an earth connection.

4. Hang the cabinet on the wall bracket. The claws on the cabinet hangers must be securely located on the wall brackets. Then secure the base of the cabinet to the wall with provided screw and cover-cap.

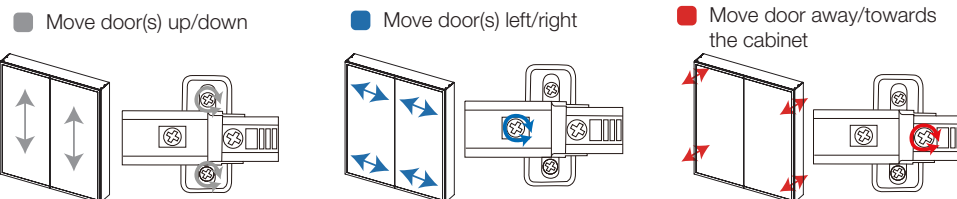


5. Close and secure the internal top electrical cover with the small screws removed earlier. And switch on the electrical supply at the mains to test the function of the lamp and the shaver socket.

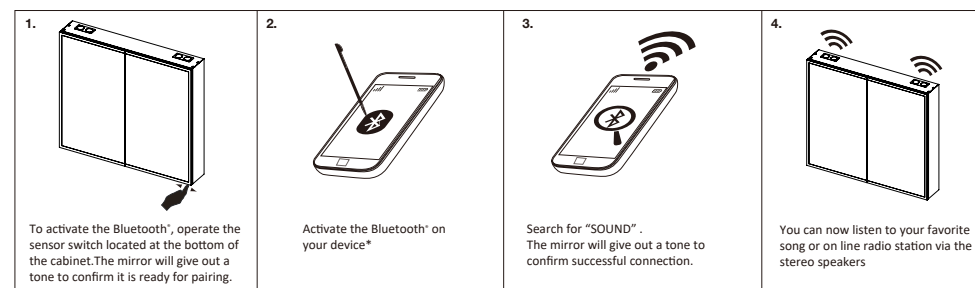
6. Insert the shelf supports in the desired positions starting with the top shelf. On the double door item, one of the doors should be removed so the glass shelves can be inserted. Please make sure to tighten the plastic screw at the bottom of the shelf support to prevent the shelves becoming loose. Rubber plugs provided can be used to cover unused shelf holes.



7. Re-attach the door(s) ensuring the hinges fully locate and click back into position. If necessary, the hinges can be adjusted in order to reposition the door(s).



8. Bluetooth® wireless technology enabled device operation



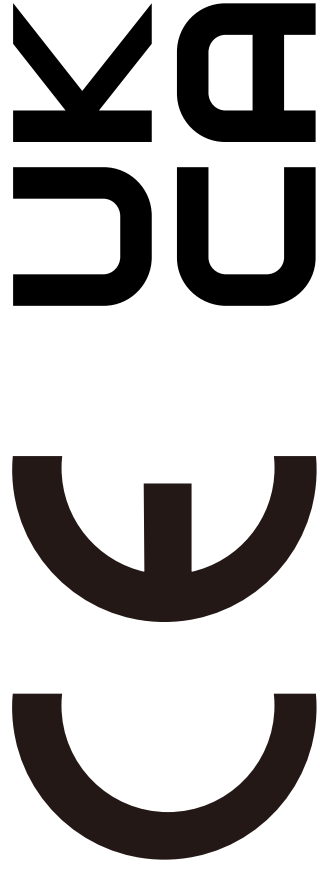
- When the mirror is turned off the connection to the Bluetooth® will be lost. When the mirror is turned on again it will automatically reconnect to the last connected device.

- Refer to your device manual for operating controls.

- Music will stop playing when a phone call comes into the Bluetooth® device, and will automatically reconnect when finished.

Trouble Shooting Guide

symptoms	possible problem	solution
Device not paired	Bluetooth® not activated	Check Bluetooth® is activated on compatible device & mirror is turned on
Device not connecting	Only one device can be connected to the mirror at any one time	Disconnect all devices and reconnect only one device
No volume	Volume is controlled from device	Increase volume on device
No connection	Out of range	Range is within 8 metres, move device closer to mirror



EN 1036-2 : 2008 Glass in Building-Mirrors from Silver Coated Float Glass for Internal Use

Resistance to fire	NPD
Reaction to fire	A1
External fire performances	NPD
Bullet Resistance	NPD
Explosion Resistance	NPD
Burglar Resistance	NPD
Pendulum body impact resistance	NPD
Resistance against sudden temperature change and temperature differentials	NPD
Wind,snow,permanent and imposed load resistance	NPD
Direct airborne sound reduction dB	NPD
Thermal properties –U-Value	5.8
Light transmission tv	NPD
Light reflection re	NPD
Solar energy transmission te	NPD
Solar energy reflection re	NPD