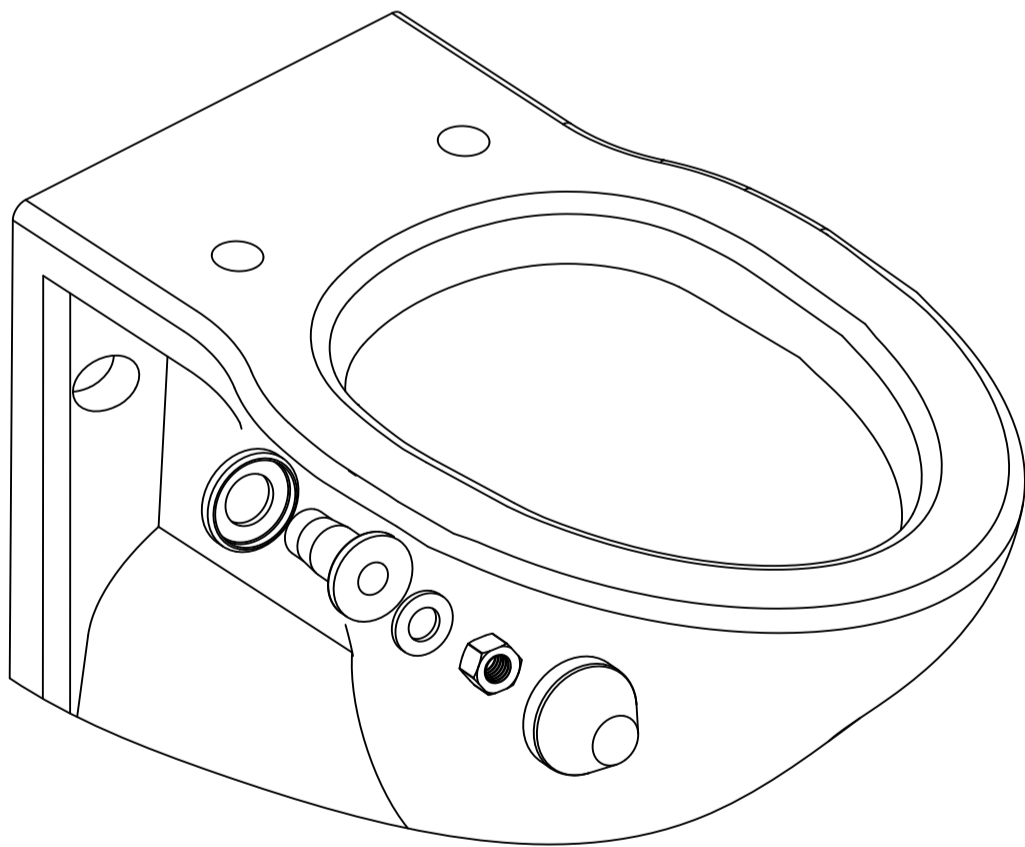
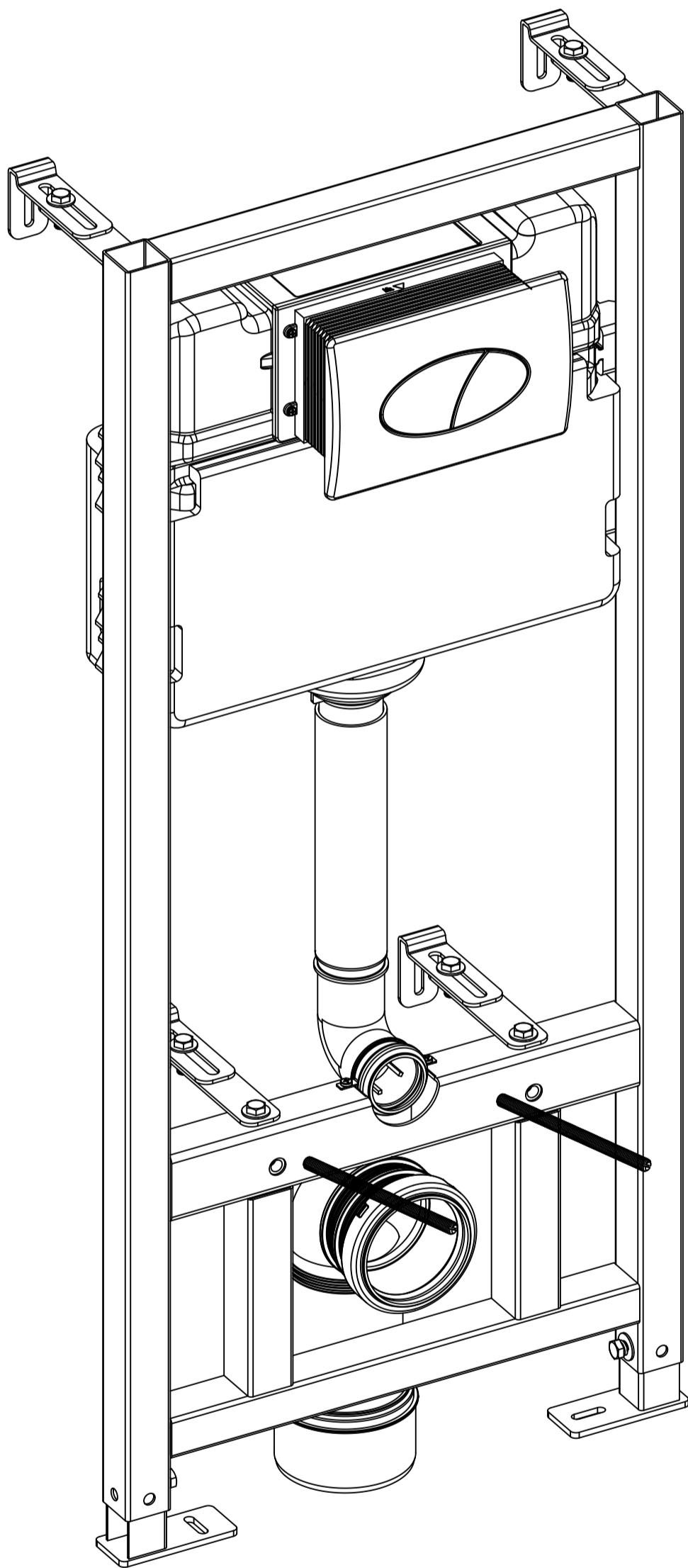


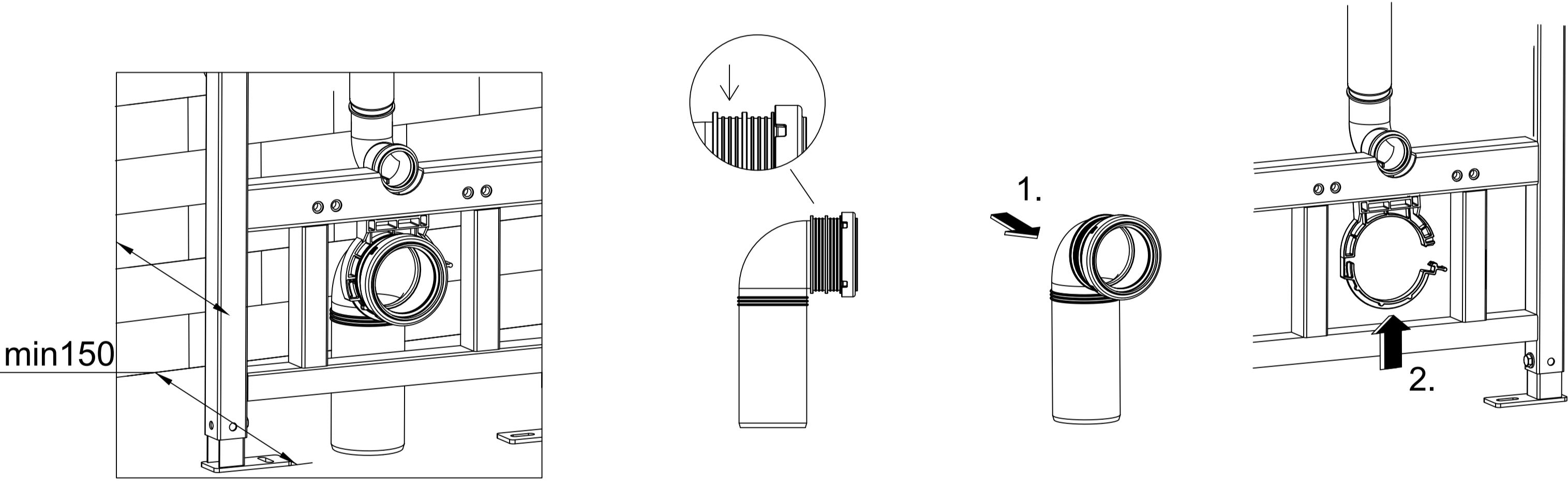
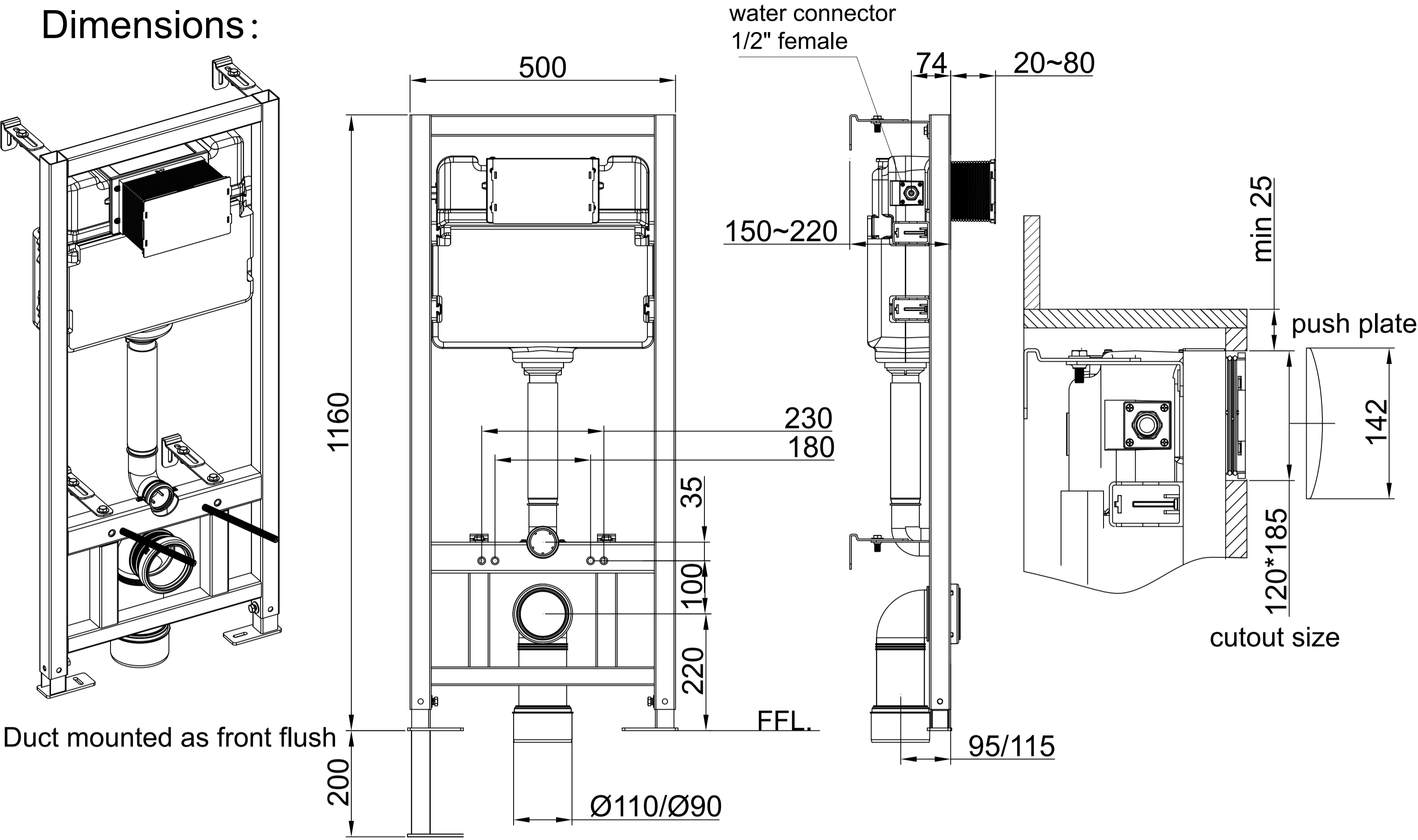
# Assembly Instructions

## Concealed Cistern & Push Button Dual Flush

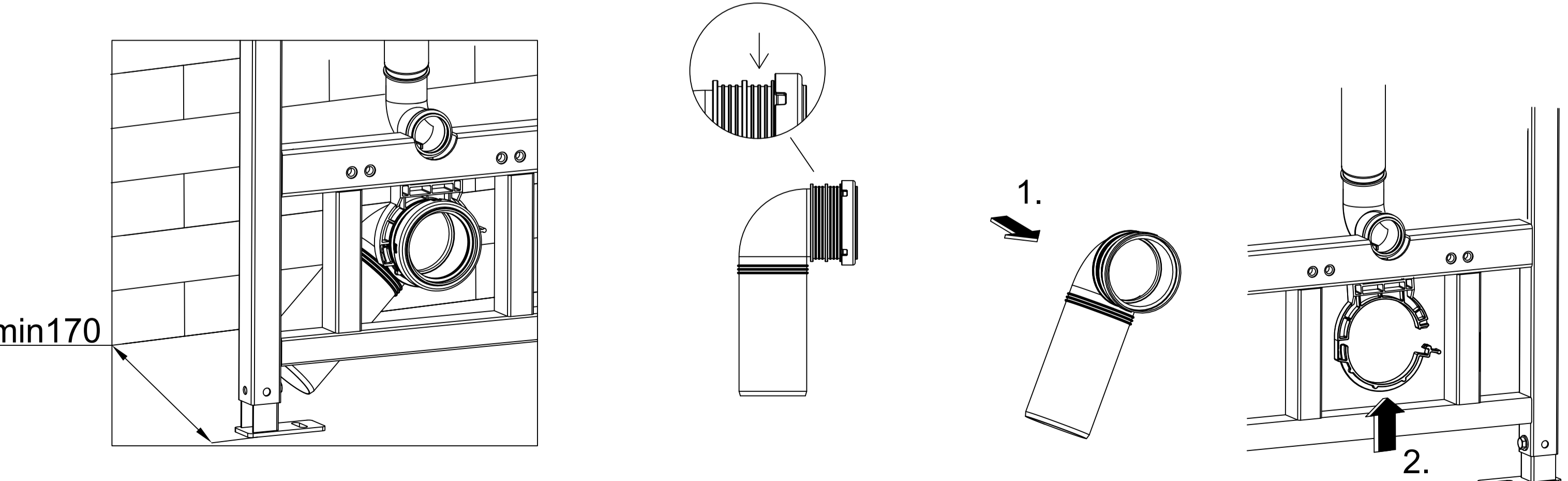


1

Dimensions :

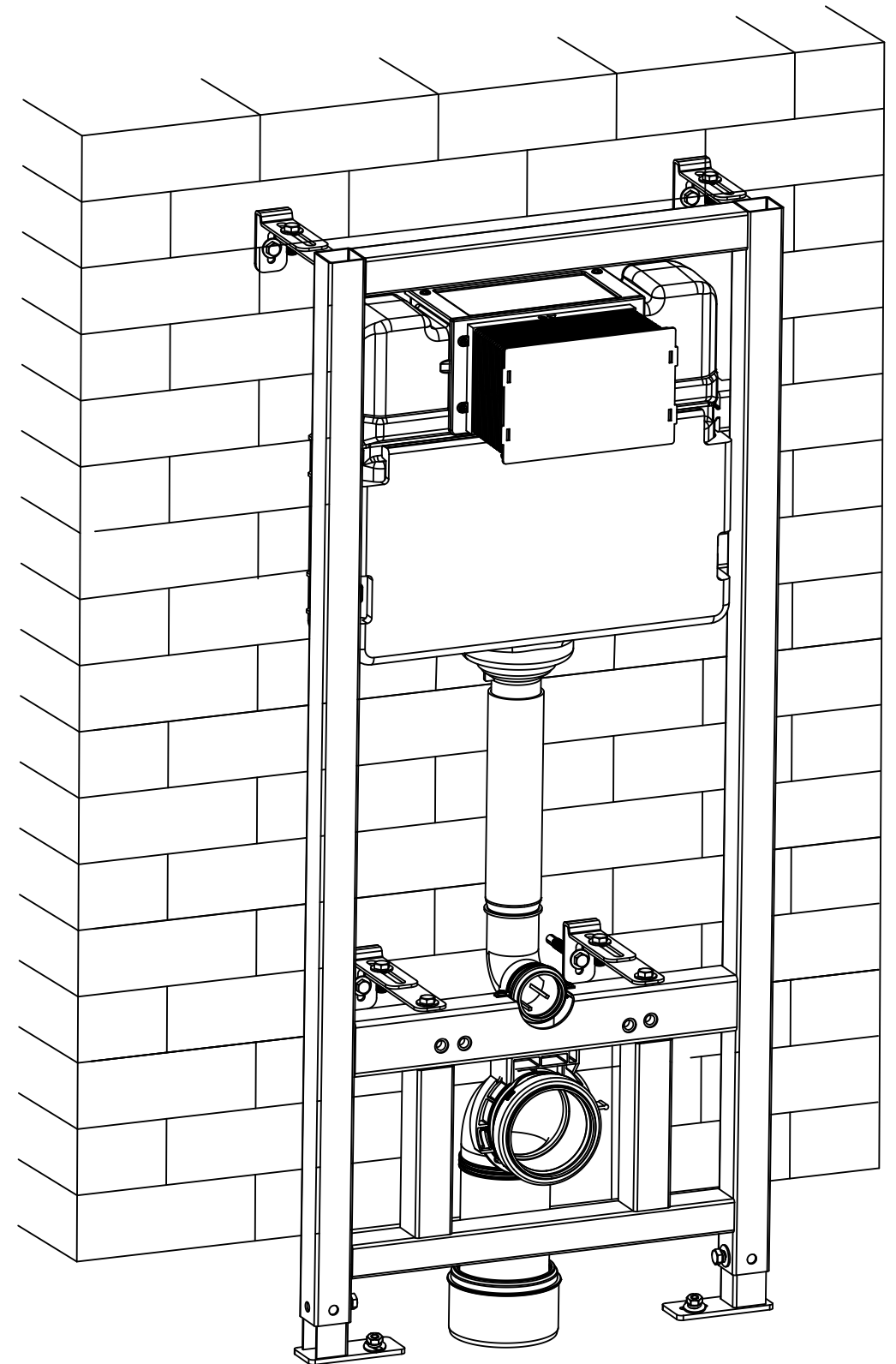
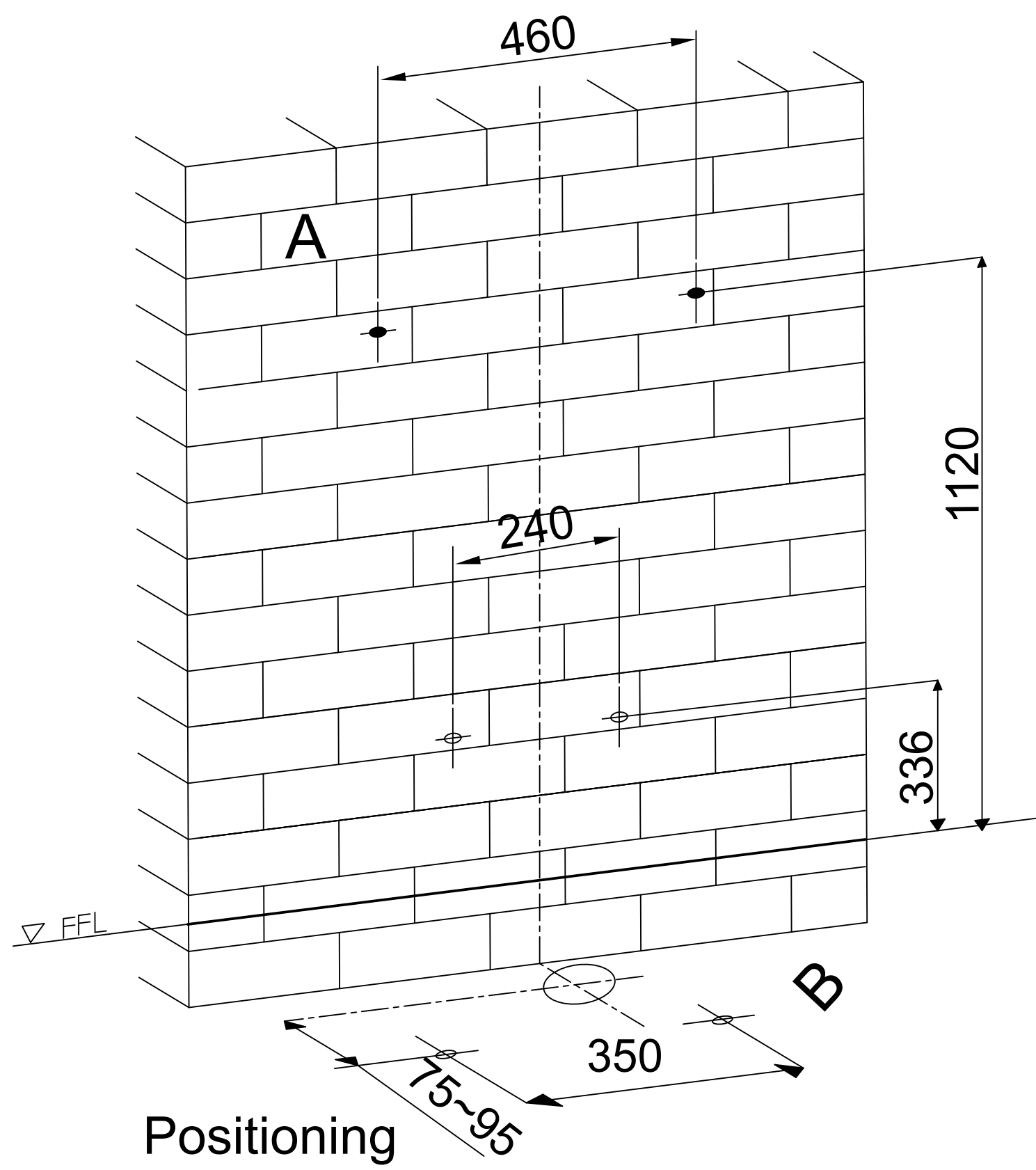


Fix the flush bend straightly

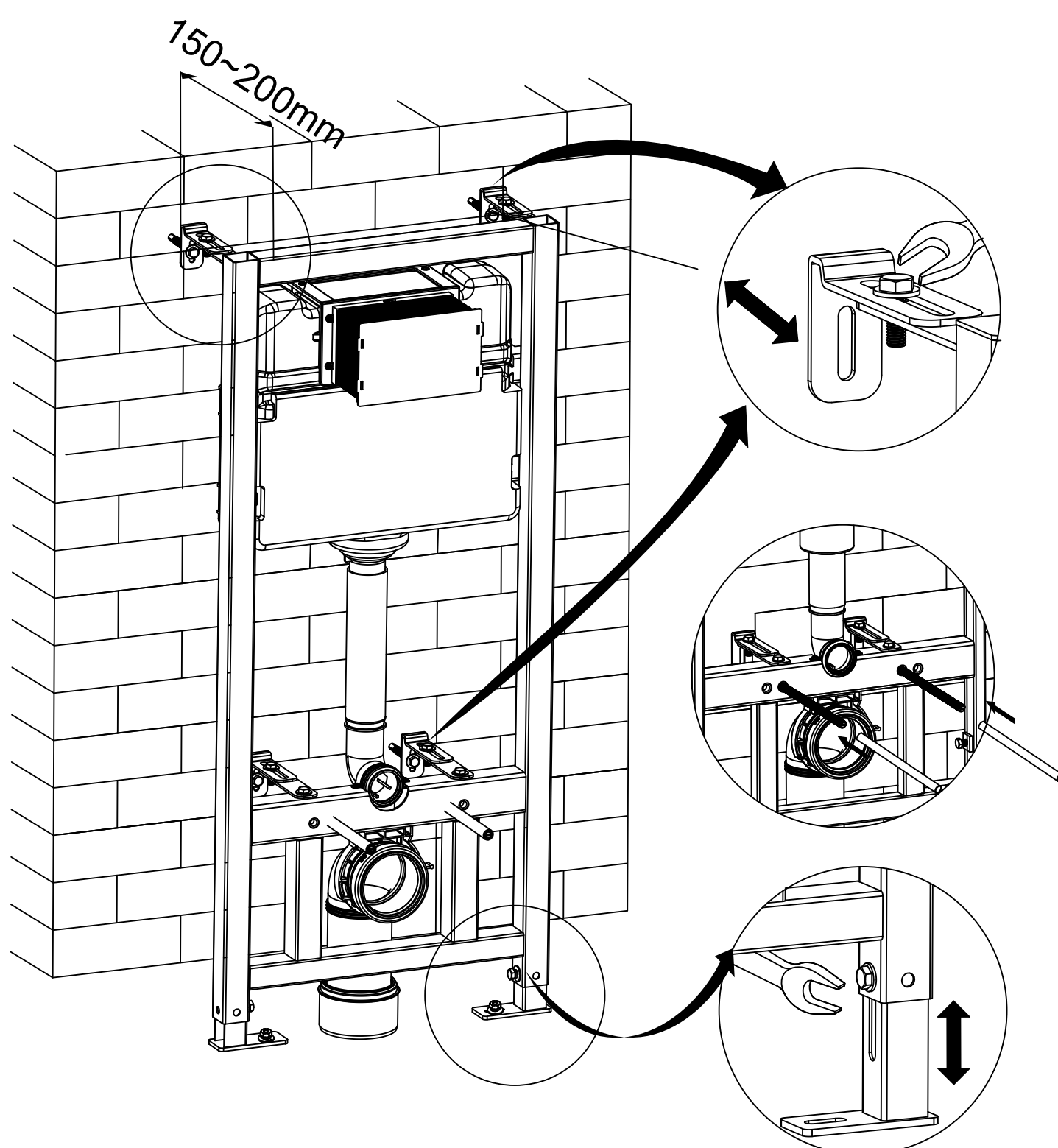


Fix the flush bend askew

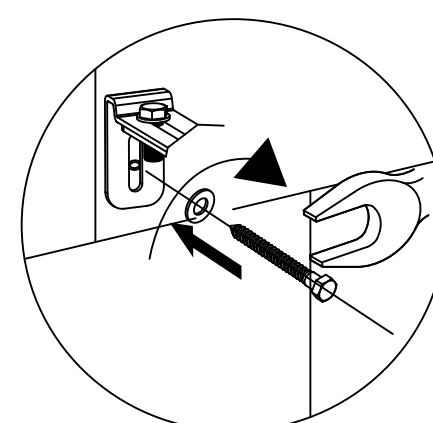
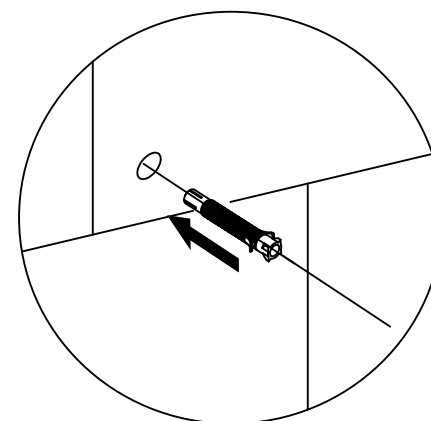
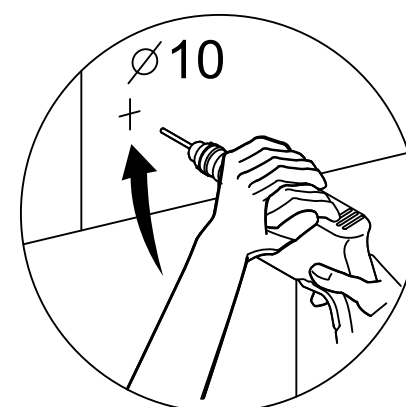
## Installation of the frame:



## Adjust the frame

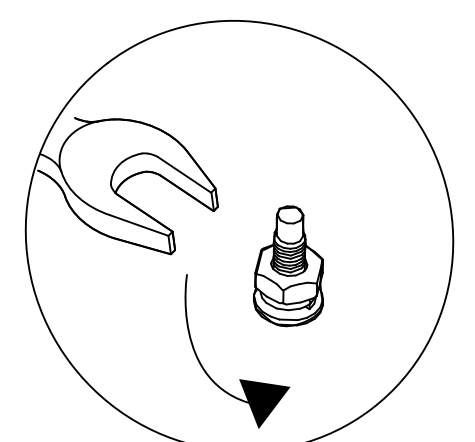
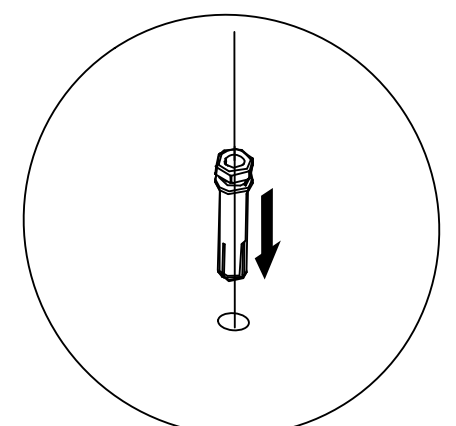
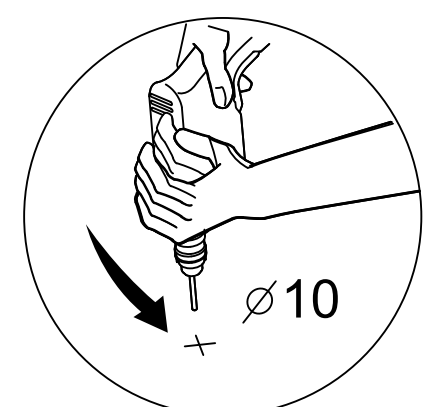


A  
Position on wall



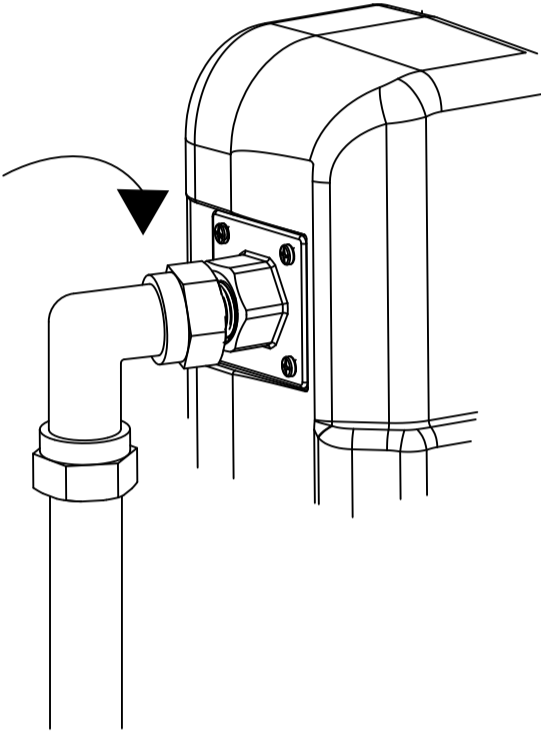
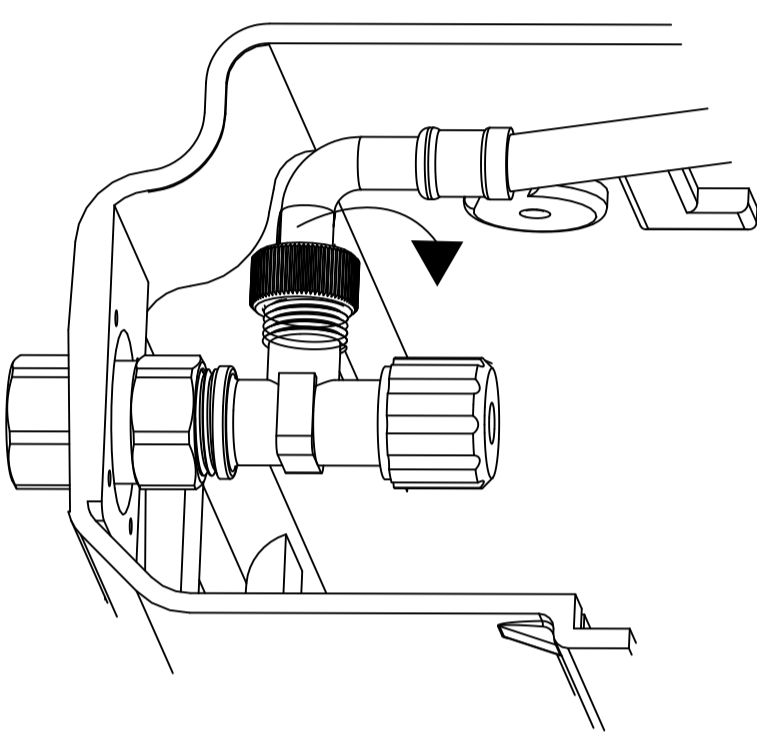
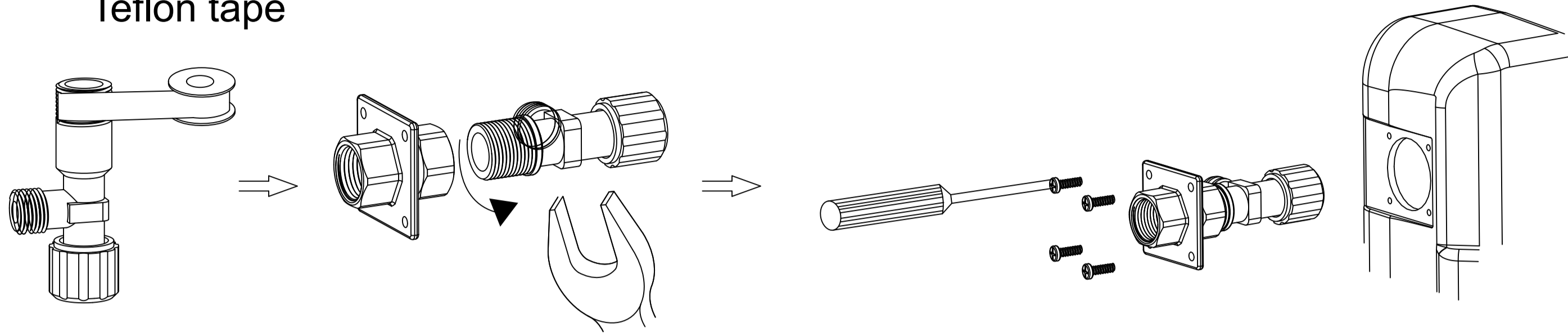
B

Position on floor

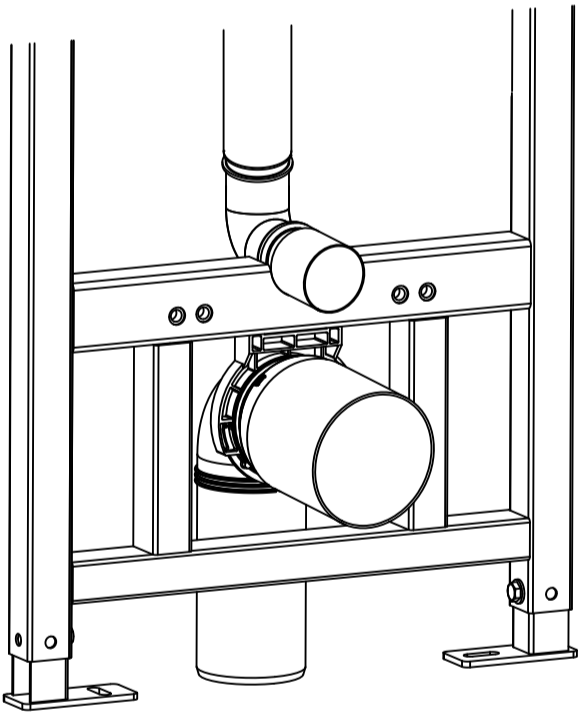
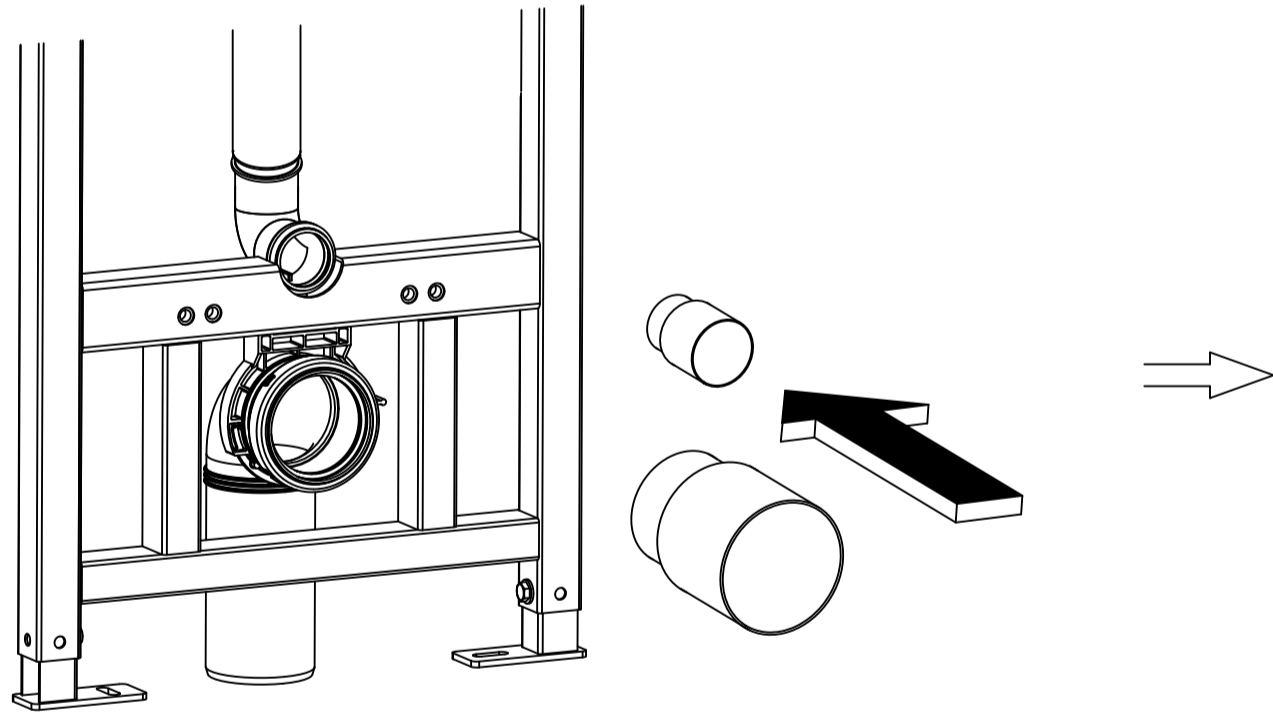


Installation of the stop valve:

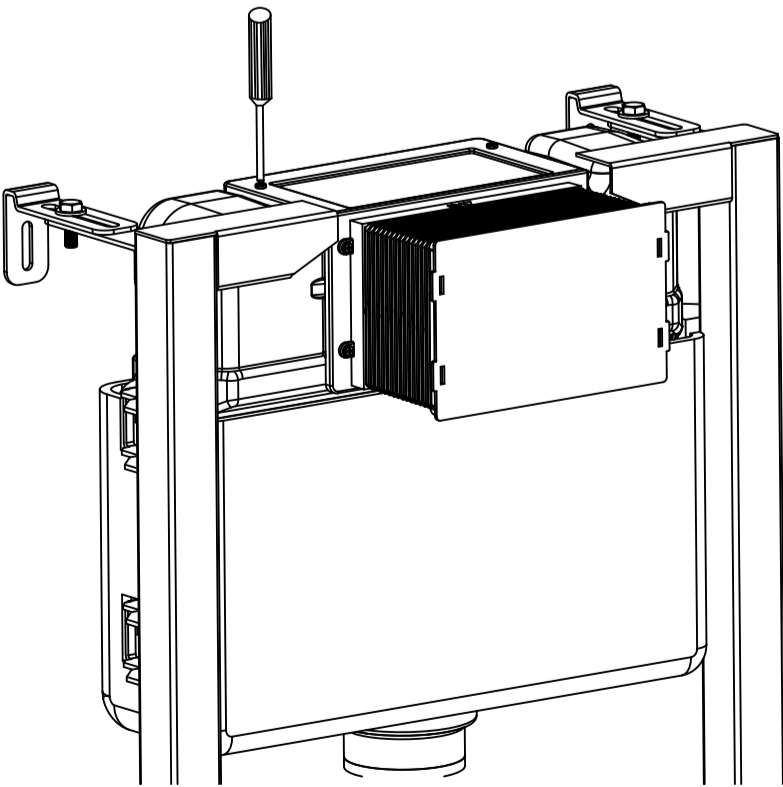
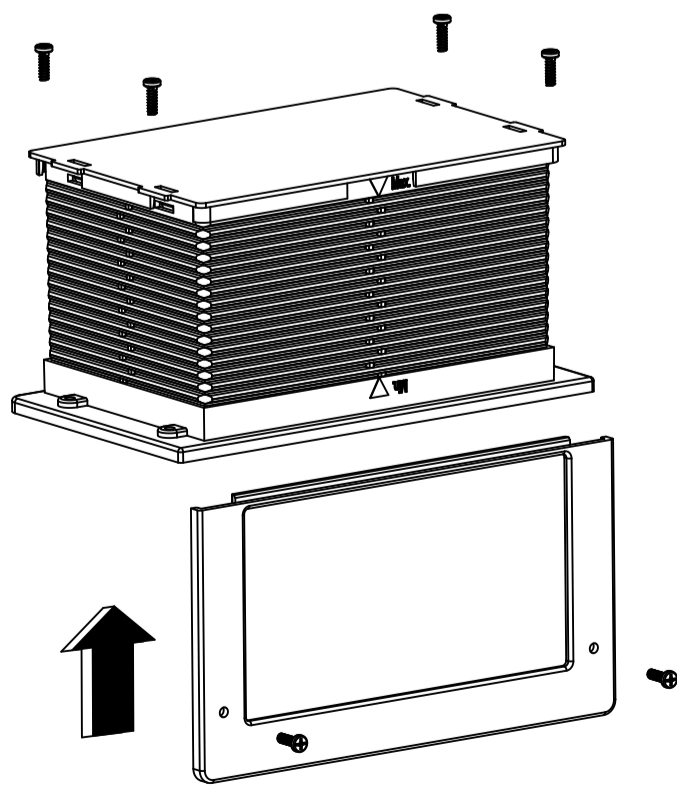
Teflon tape



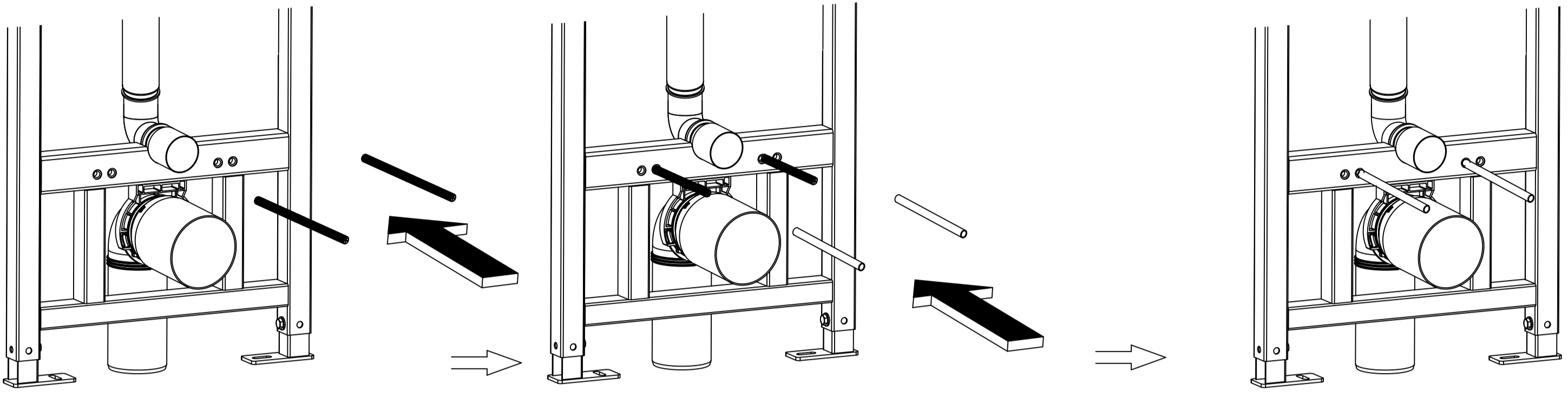
Installation of bend plug:



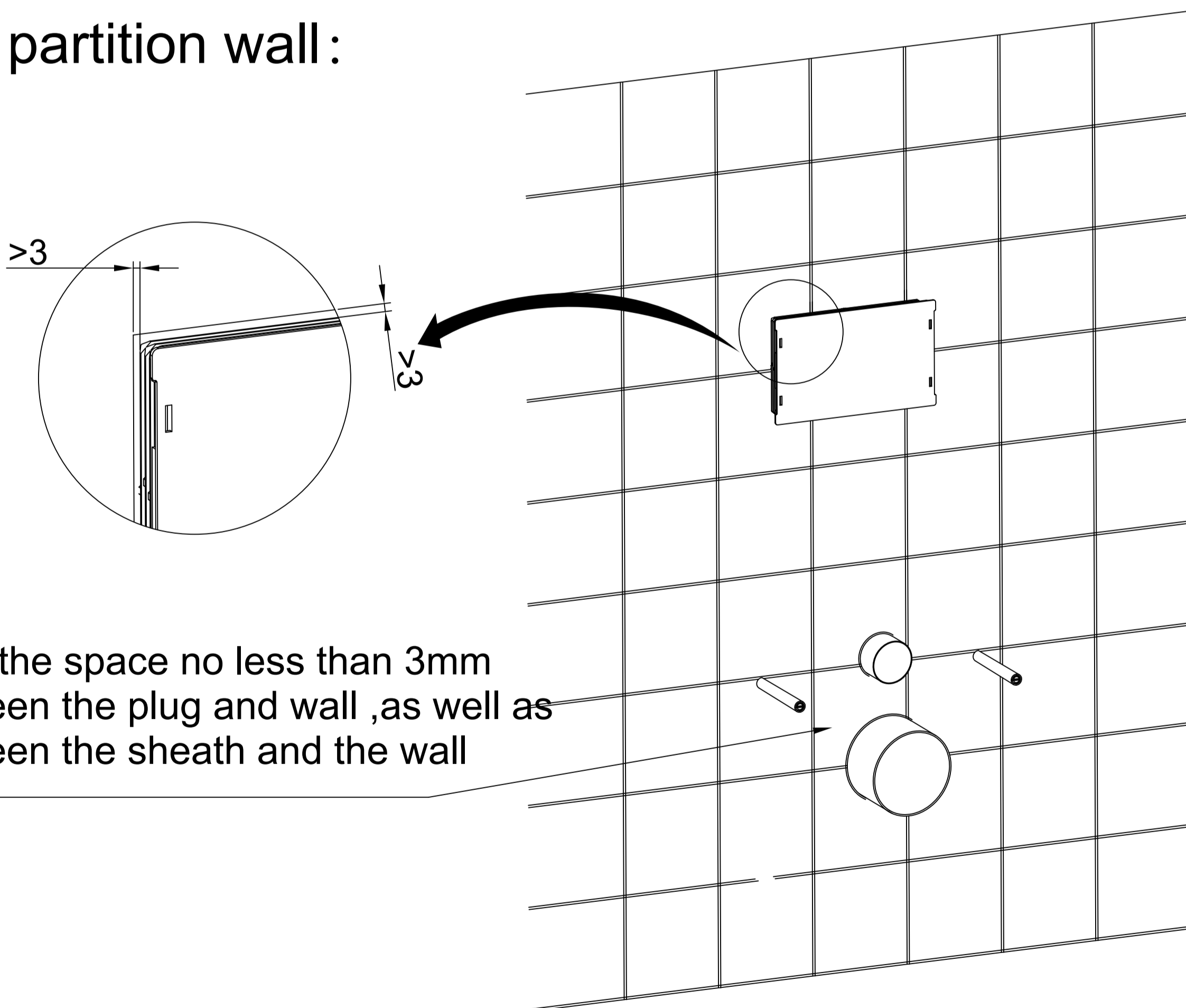
Installation of protective case:



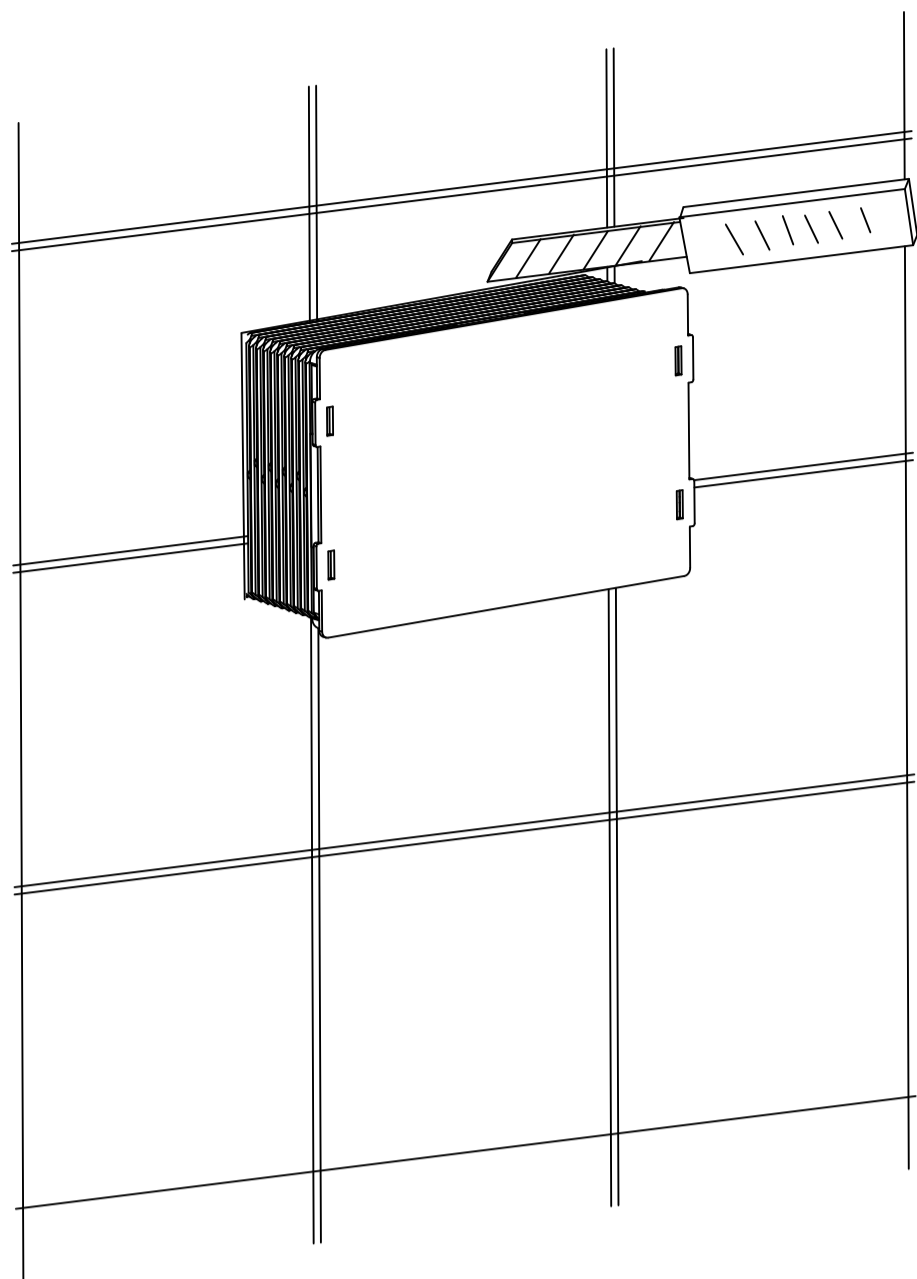
## Installation of the threaded rod kits and flexible sheath:



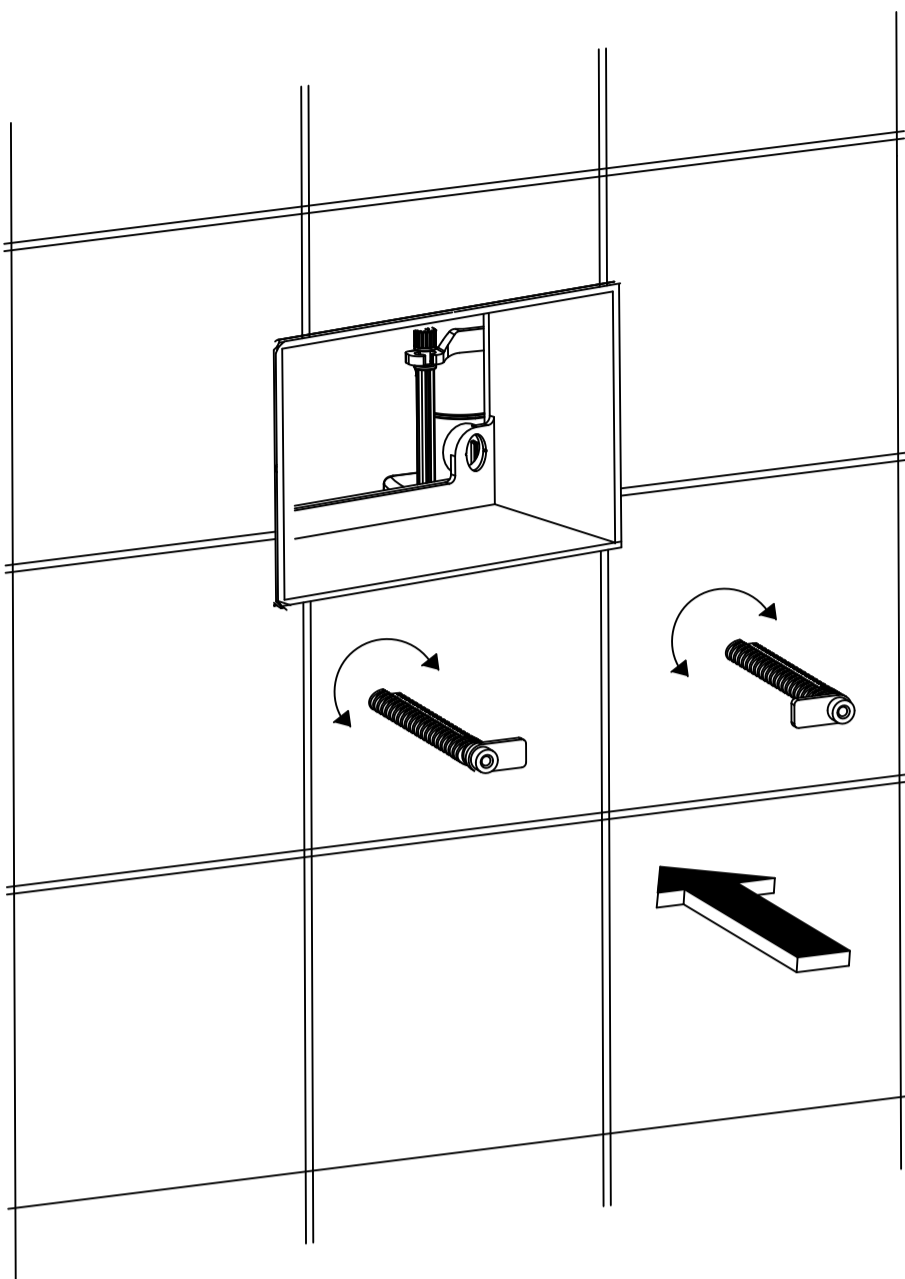
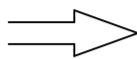
## Build the partition wall:



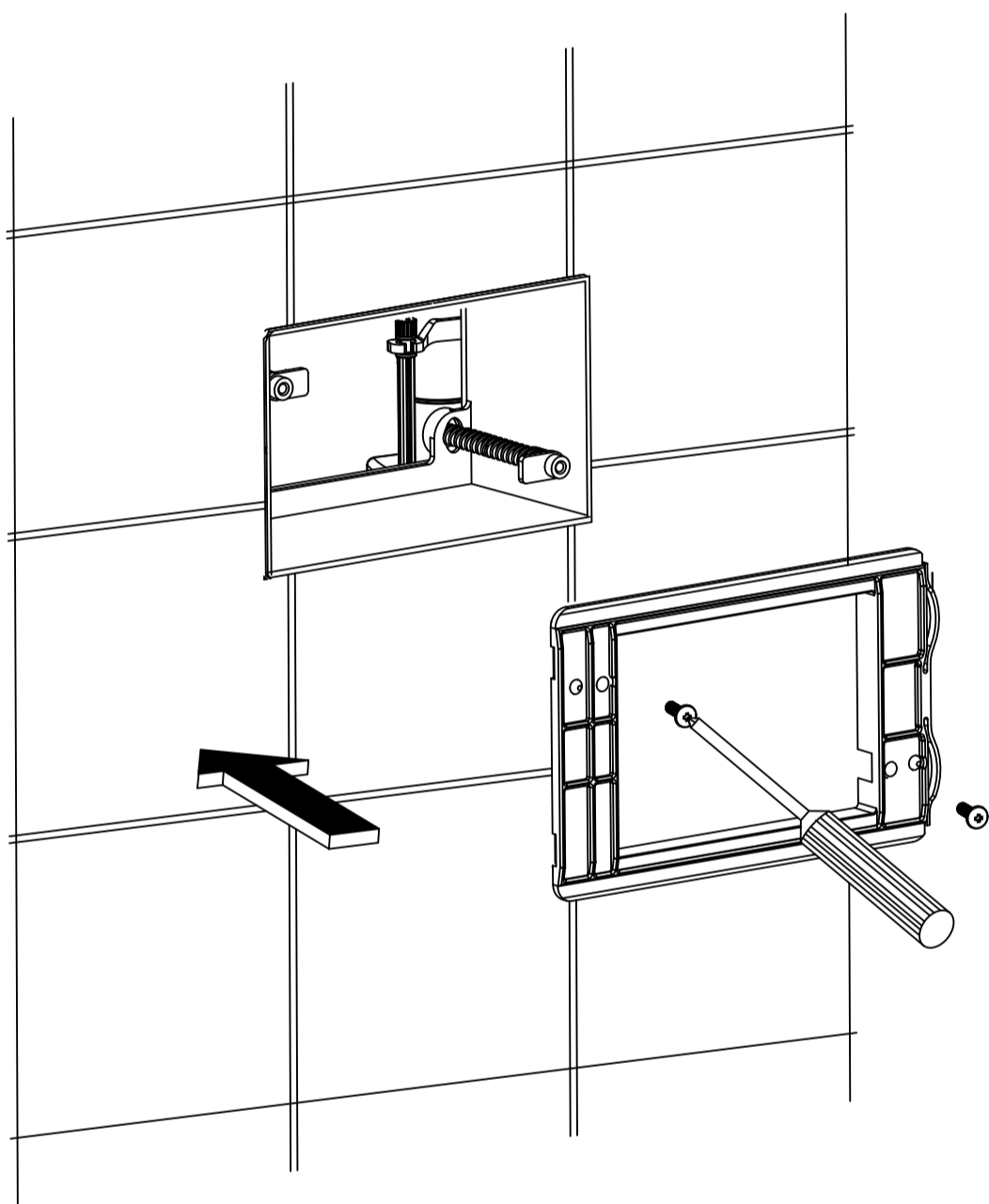
Installation of cotrol plate base for control plate buttom:



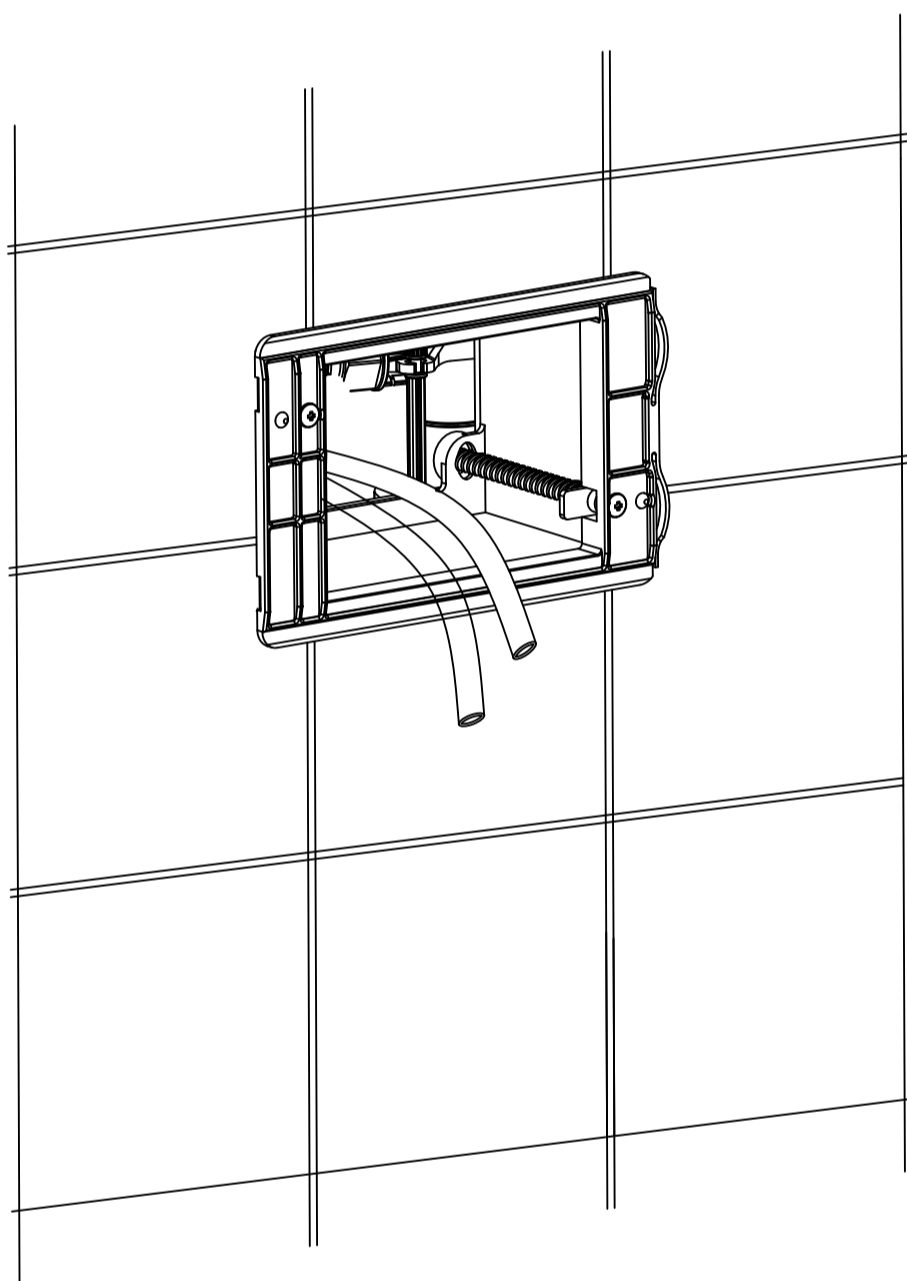
(1) Flatting the protective case frame against the wall surface



(2) Screw in the levers for control plate

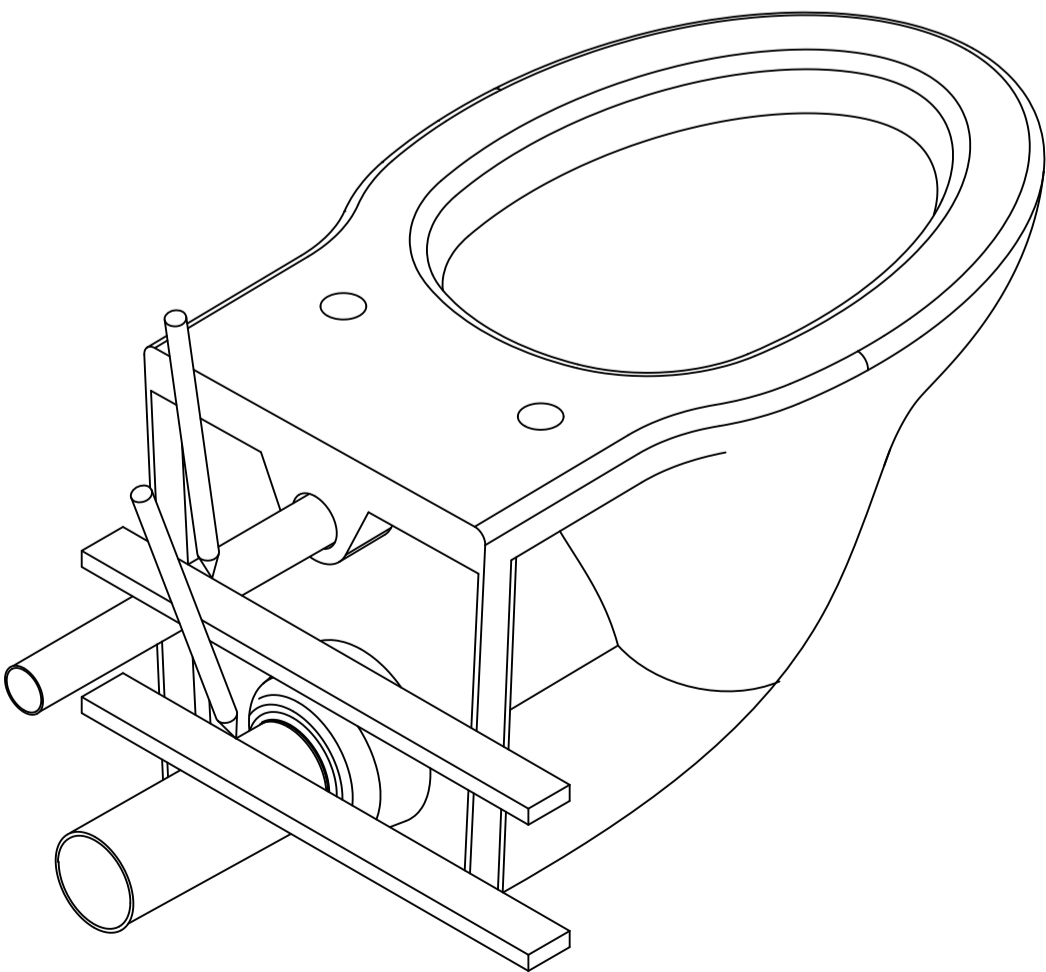
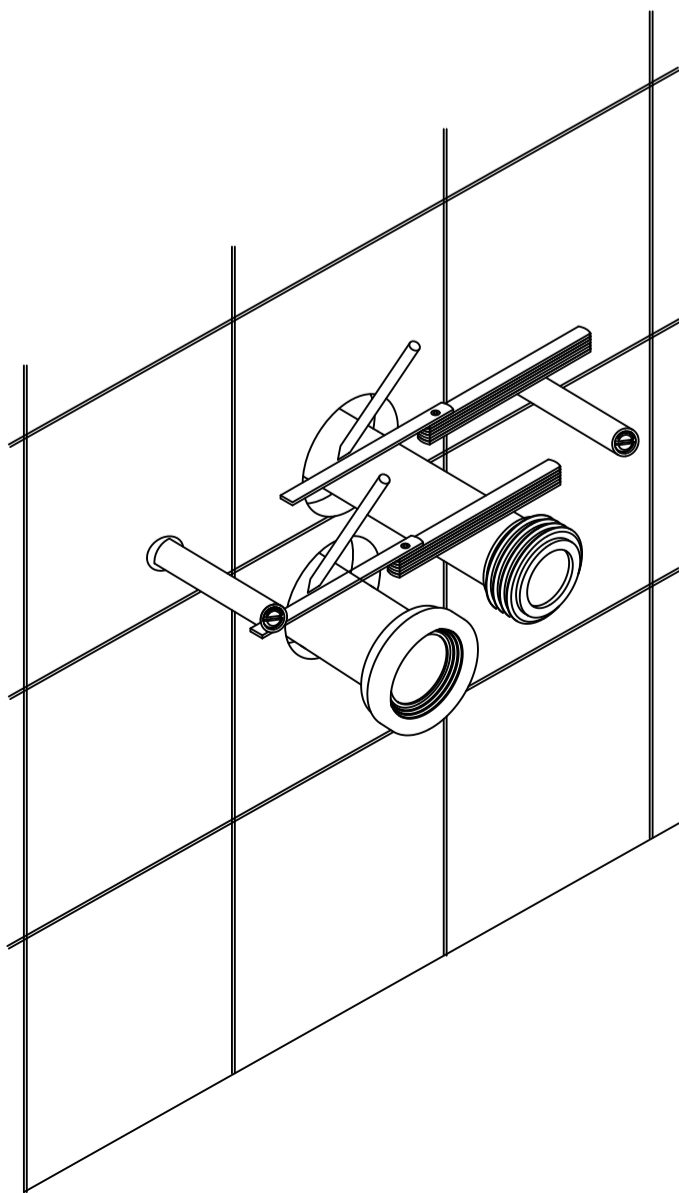


(3) Fix the control plate base

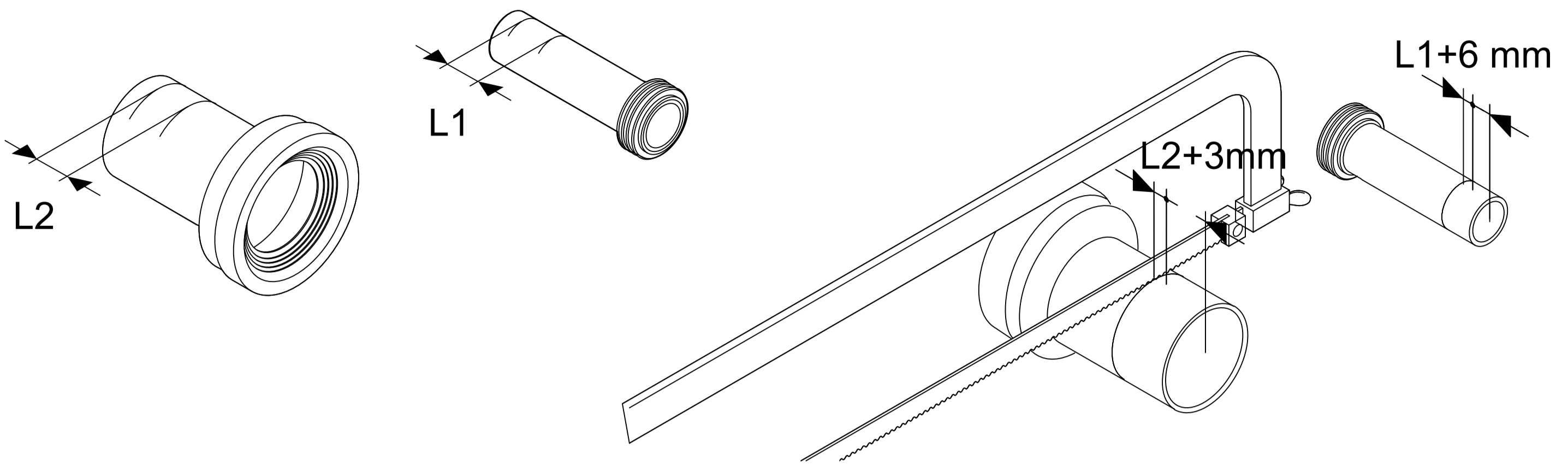


(4) Take out the air hose pipe

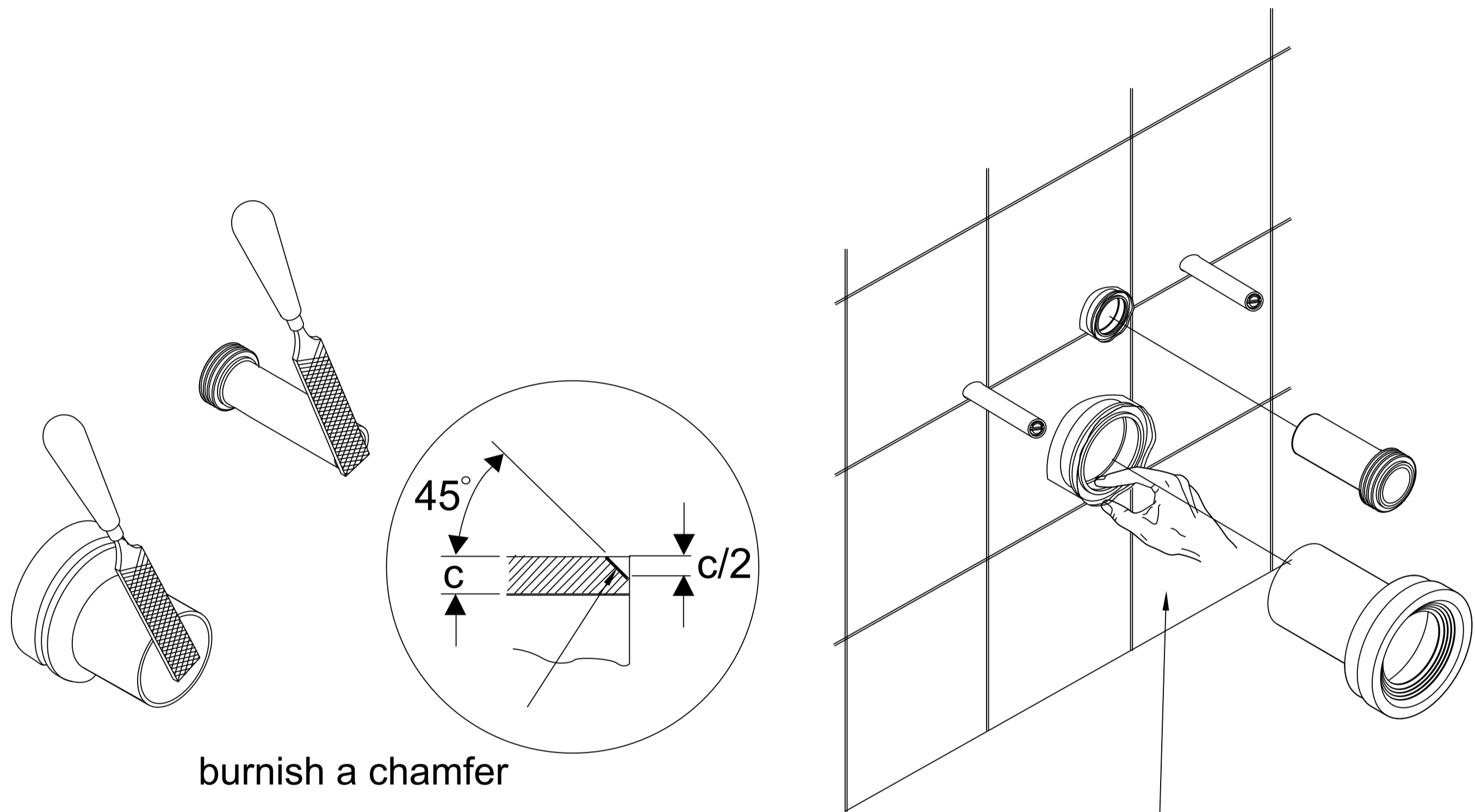
Installation of the toilet:



Draw on the supply pipe and flush pipe



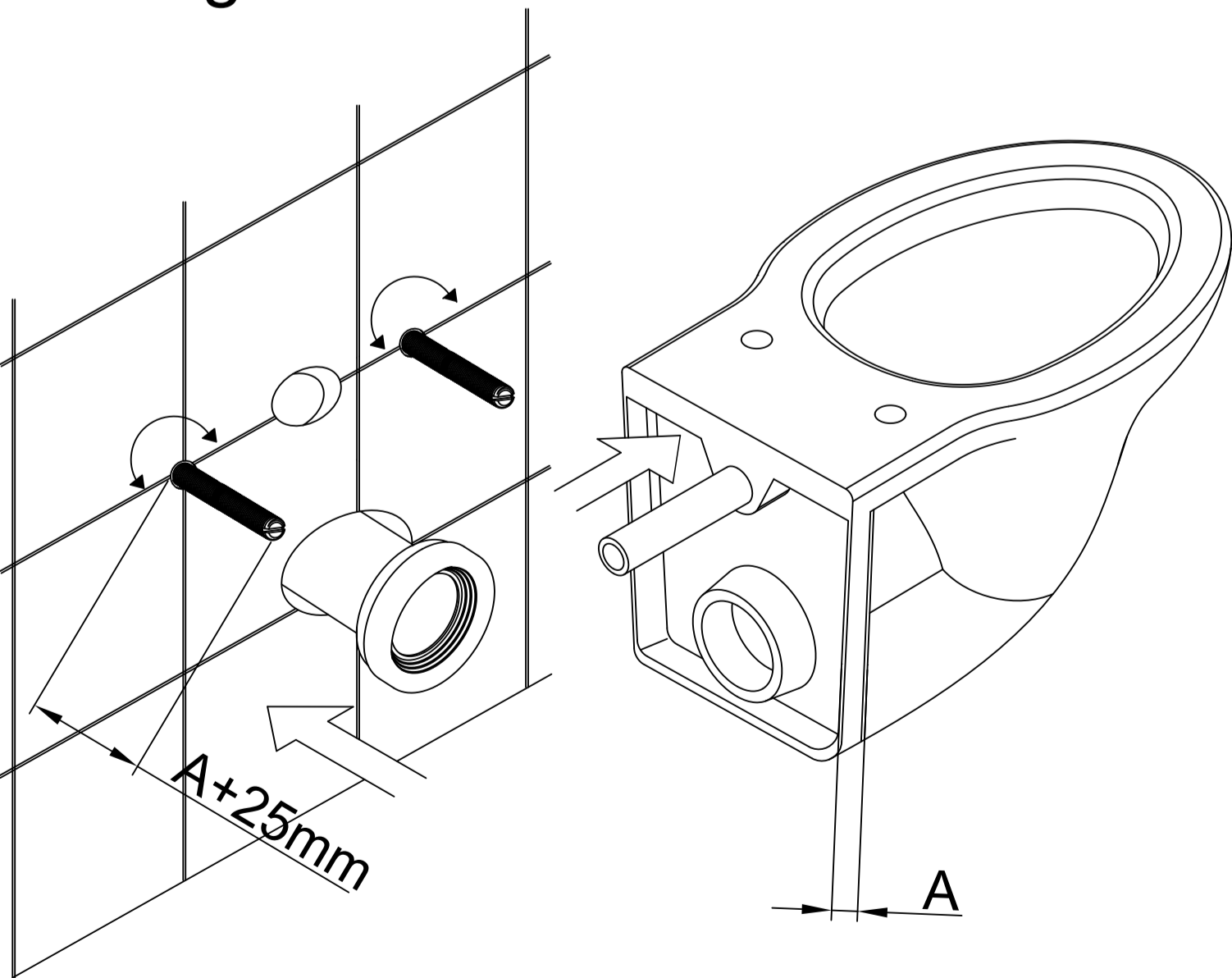
Reduce the supply pipe and flush pipe



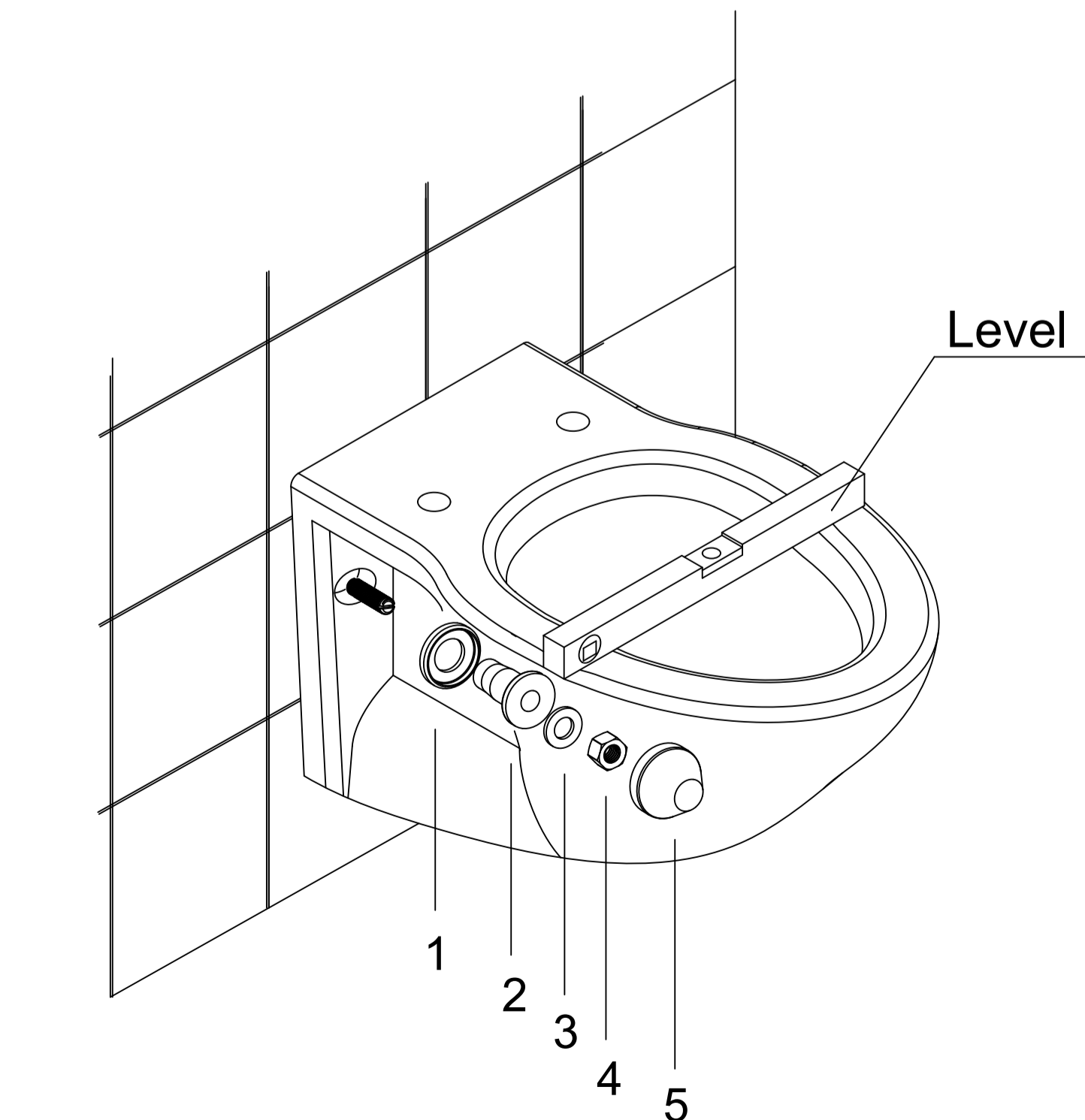
Burnish a chamfer on the head face of the supply pipe and flush pipe

Apply silicon oil

Fixing of the toilet

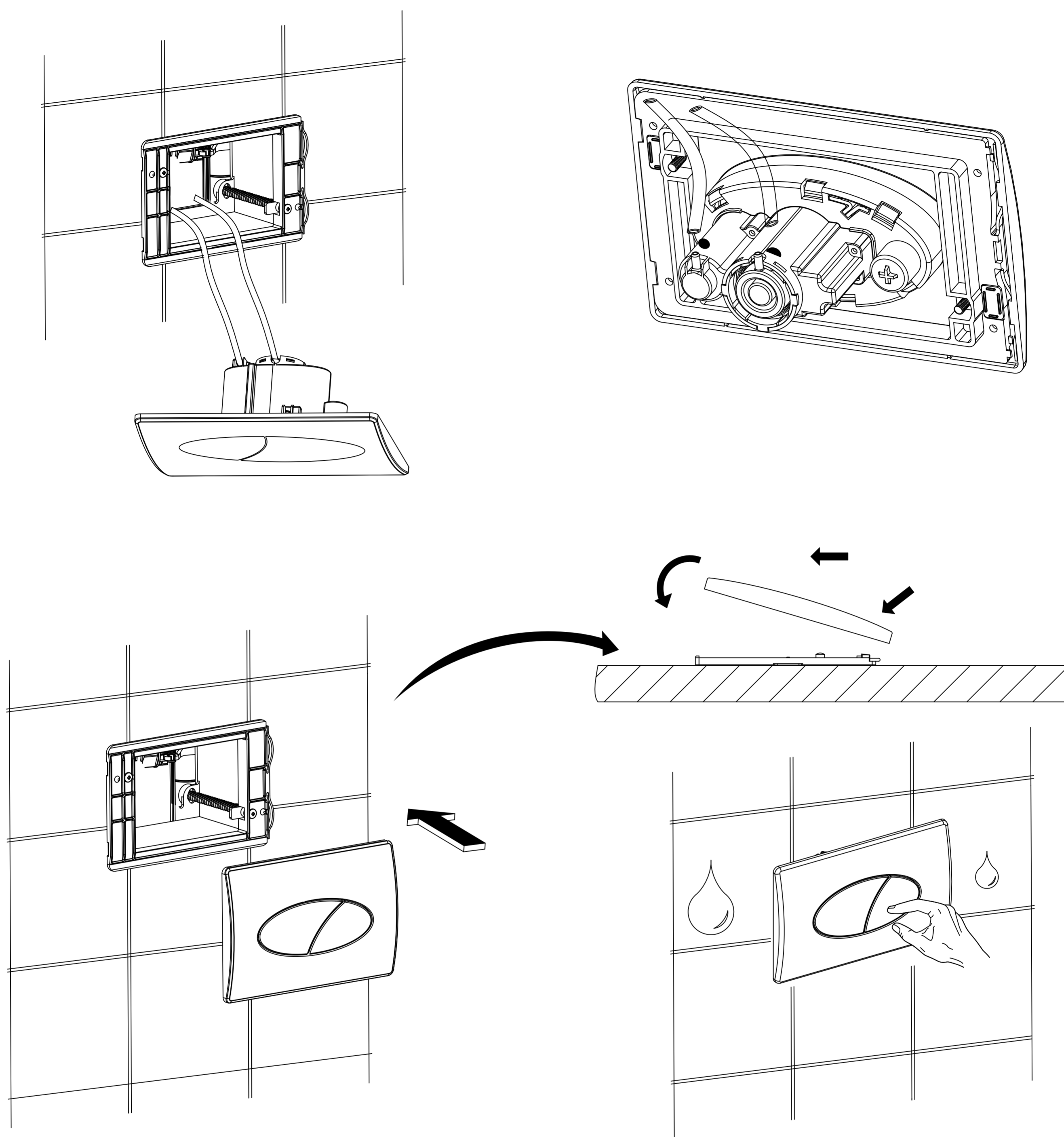


After removing flexible sheath,adjust the threaded rod exposed outside .Then fix the supply pipe onto toilet and the flush pipe onto wall

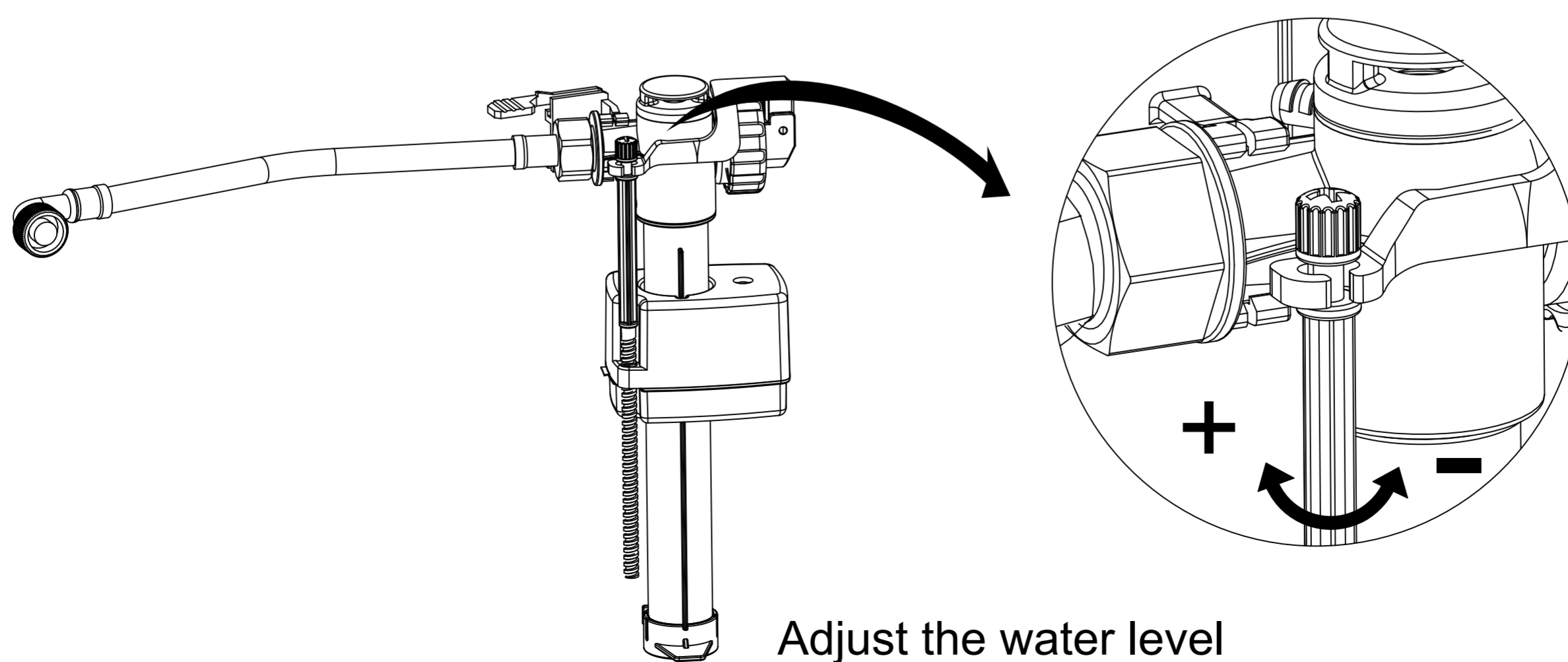


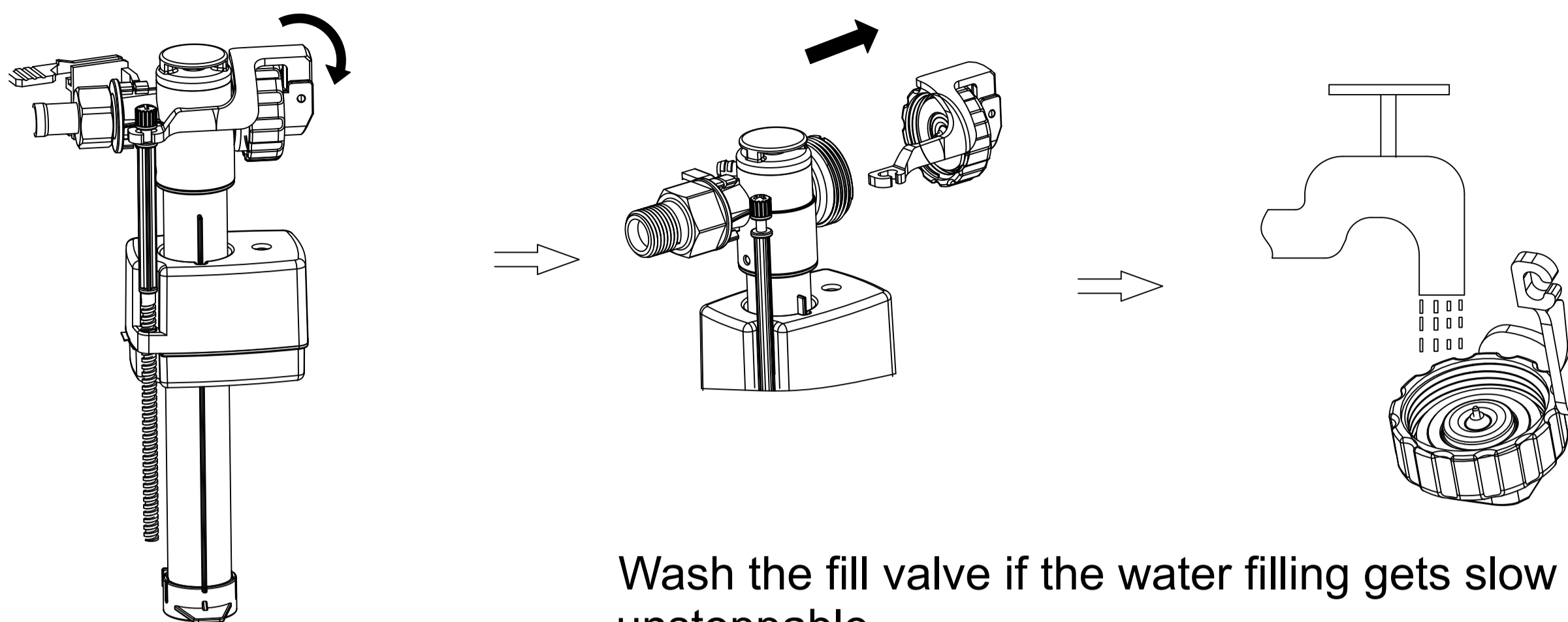
Fix the threaded rod kits and adjust the toilet to right position

## Installation of control plate:



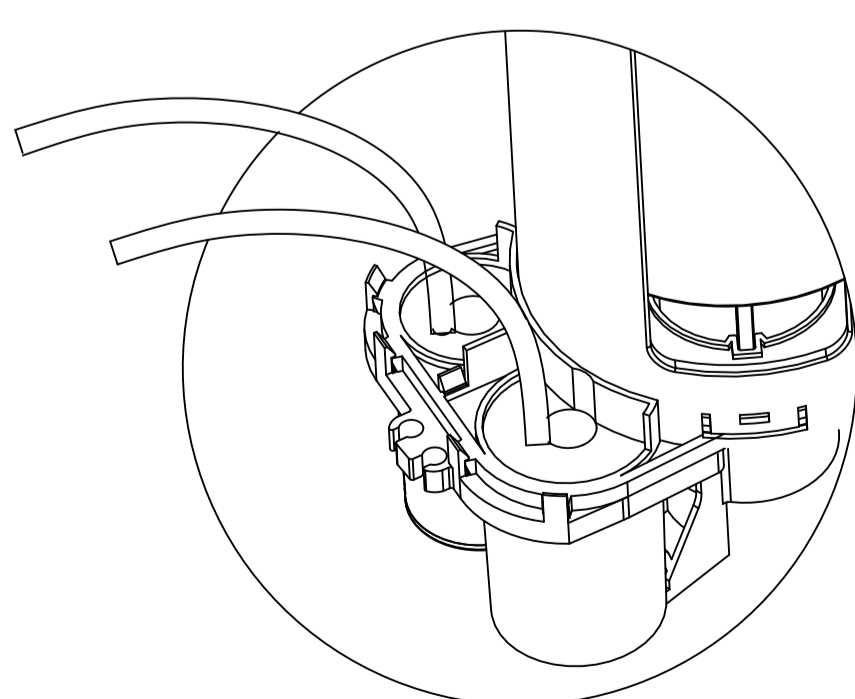
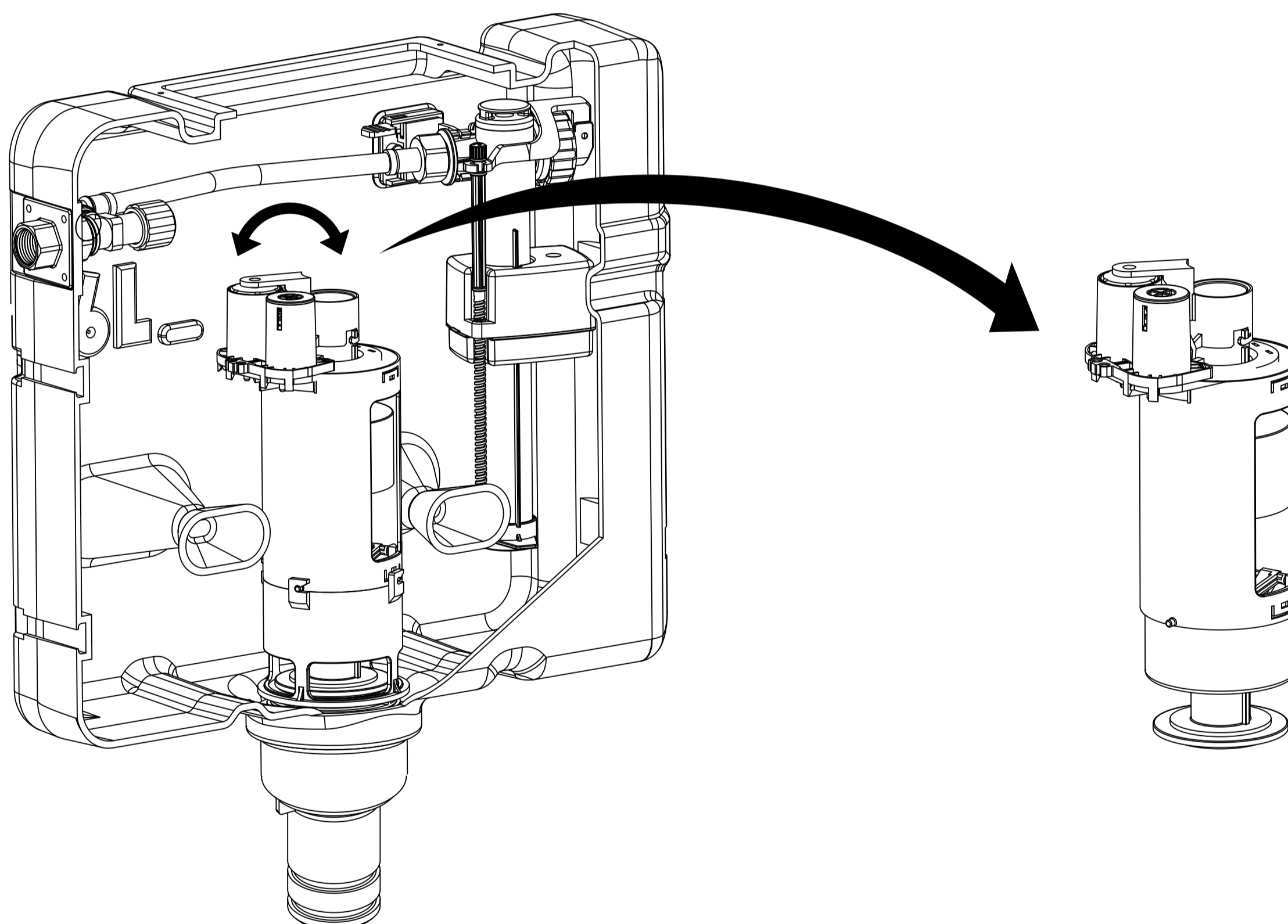
## Maintenance of the cistern fittings:



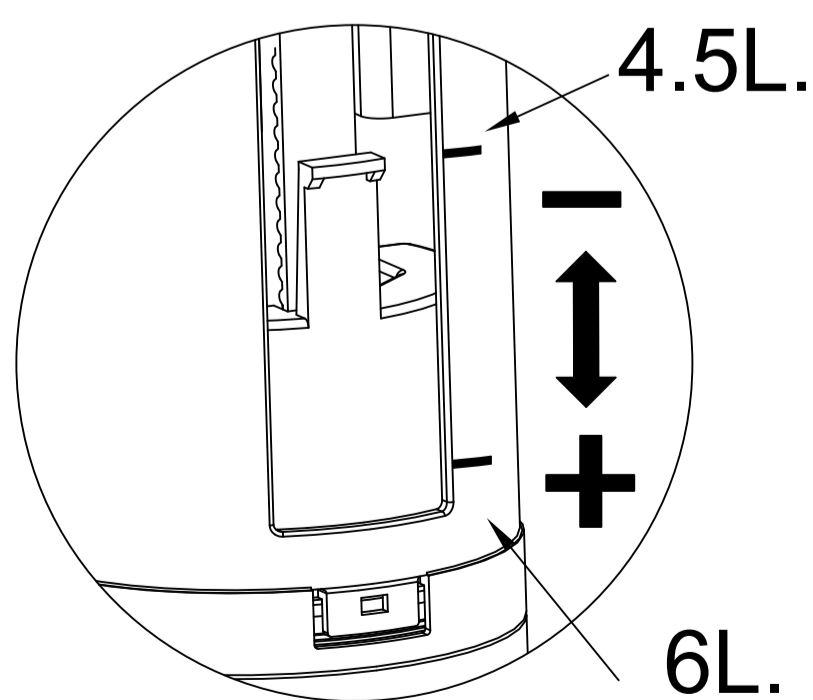


Wash the fill valve if the water filling gets slow or unstoppable

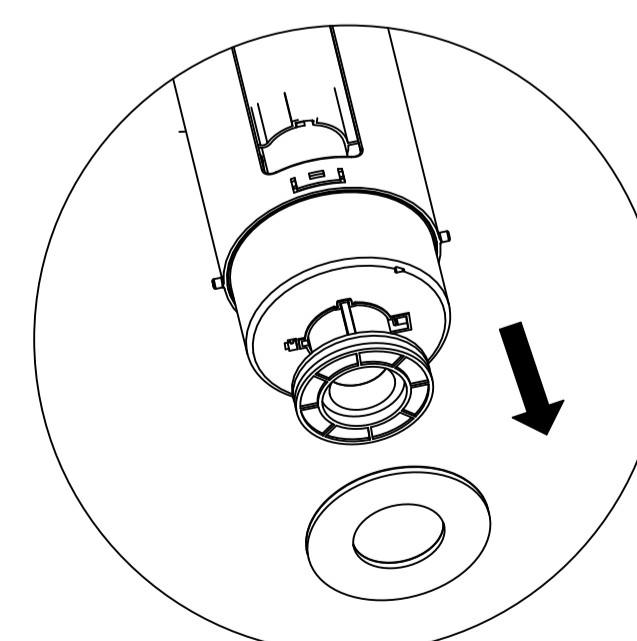
## Installation & remove the flush valve



Assemble the air hose pipe

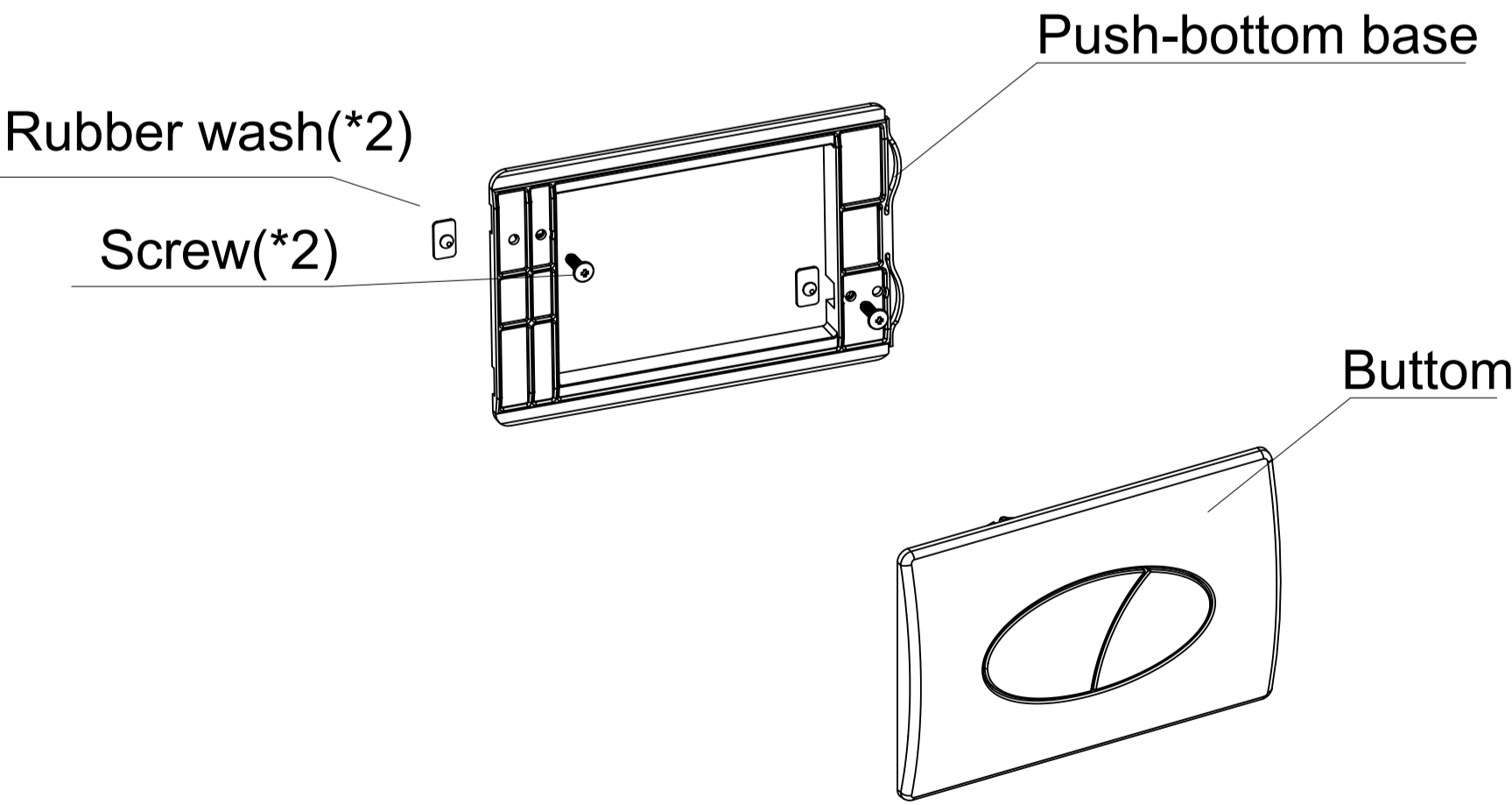
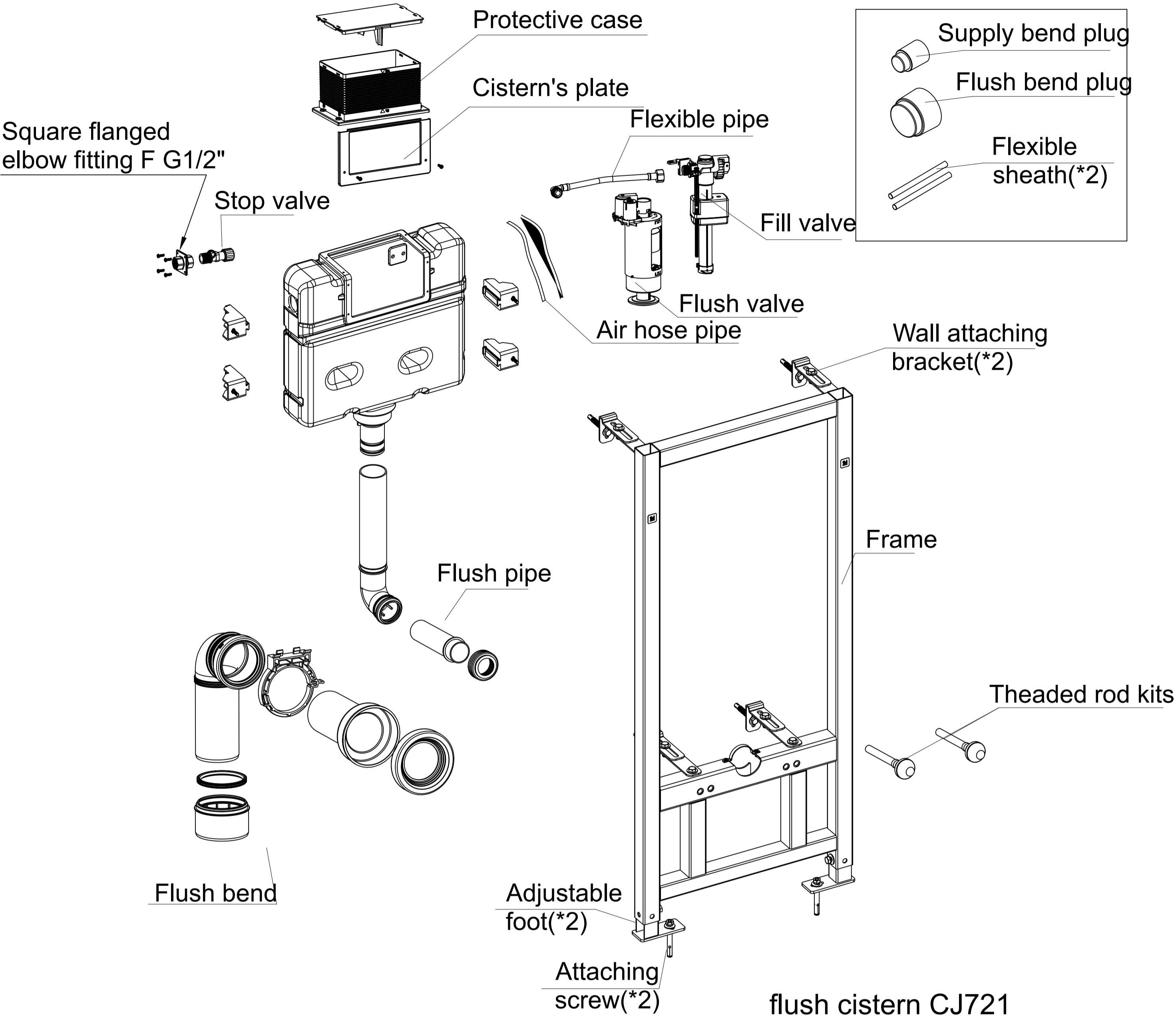


Adjust the flushing volume of the flush valve



Maintenance of the seal

Spare parts:



pneumatic push-button CJ509

