

Bath Panels - Qube Fitting Guide

Thank you for purchasing this bathroom furniture.

All product guarantees are subject to the following terms and conditions. The product has been fitted/installed in accordance with the appropriate fitting instructions. The product has been maintained and cared for in accordance with the instructions, including regular and appropriate cleaning. If the product has been modified, misused, neglected, wilfully or accidentally damaged then the product guarantee is invalid.

The guarantee only covers the material structure and not moving parts that perish due to fair wear & tear. In the event of a guarantee claim, the liability of the company is limited to the product supplied and does not extend to consequential loss or damage arising from defective product. The guarantee applies to the original purchaser ONLY and is not transferable. This guarantee does not affect your statutory rights and is applicable in the UK and Republic of Ireland.

Care & attention of your product:

All furniture and worktops should be dried after every use, taking special notice to edges of drawers, doors & worktops. Water left on the surface of furniture will eventually find its way into the core.

Sealant lines should be periodically checked for signs of failure and any failures must be removed immediately and resealed.

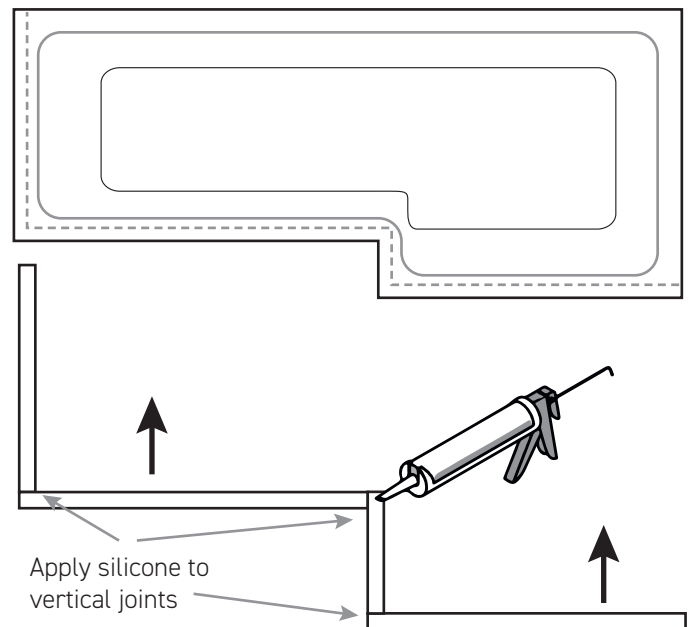
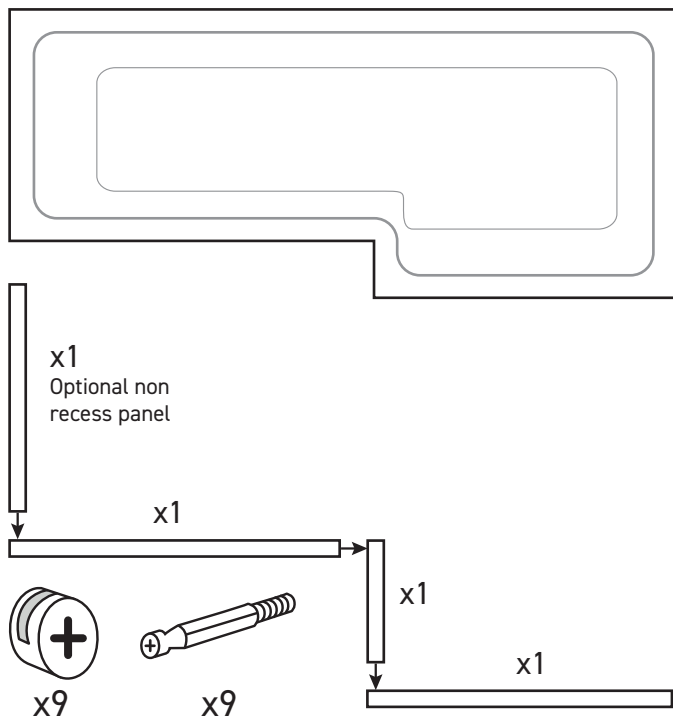
We recommend cleaning your product once a week, using only a moist soapy cloth, this then needs to be dried off using a paper towel or dry cloth.

Using bleach based substances on your furniture, toilet seats, gel cast basins or worktops, will damage your product and this will affect your guarantee.

Important note:

Any furniture that is drilled or cut will not be guaranteed against water ingress or delamination.

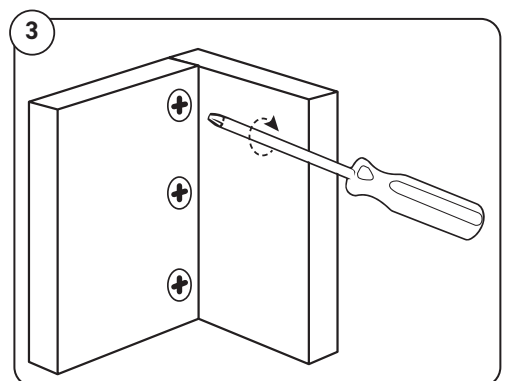
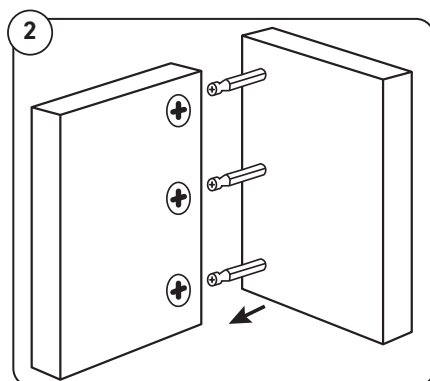
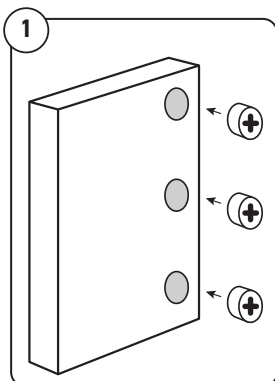
Before starting please ensure you are working on a flat level area, with no debris that could damage your new bathroom furniture.



Apply silicone to vertical joints

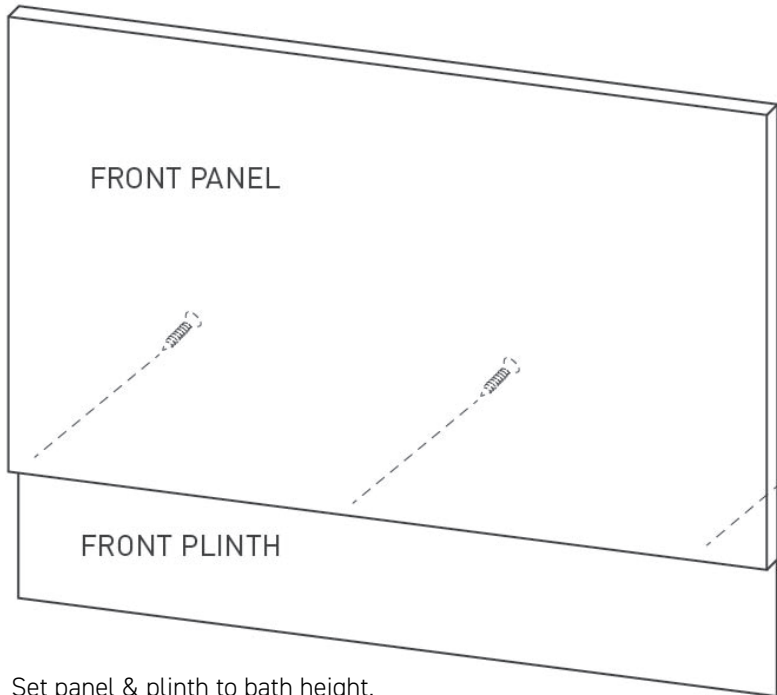
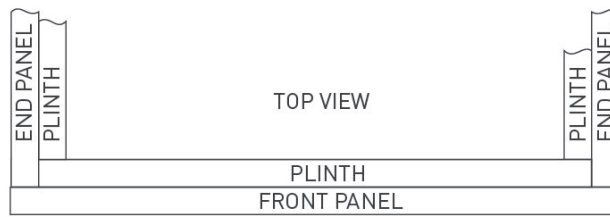
Apply silicone between the **underside** of the bath and the **top** of the bath panel

NOTE: If the panels have to be cut, please use a fine tooth hand saw on the face of the panel only. Then seal with 2 coats of sealer.



Bath Panels - Standard Fitting Guide

Before starting please ensure you are working on a flat level area, with no debris that could damage your new bathroom furniture.



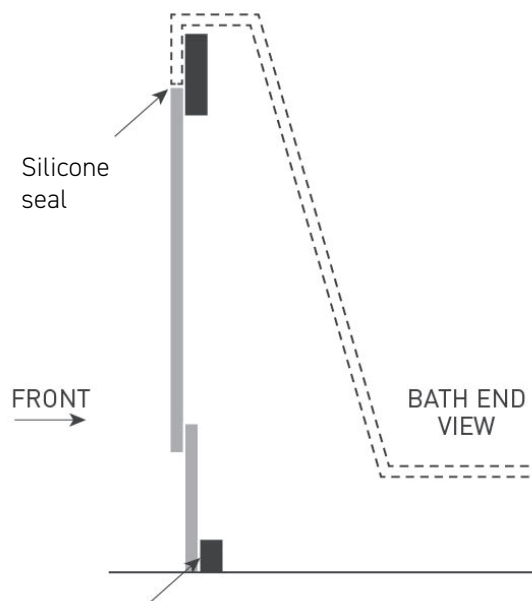
FRONT PANEL
REQUIRES
3 x 25mm No.8 SCREWS
(Not supplied)

END PANEL
REQUIRES
2 x 25mm No.8 SCREWS
(Not supplied)

Set panel & plinth to bath height.

Screw panel onto plinth from behind - DO NOT screw all the way through as screws will protrude through the front.

NOTE: If the panels have to be cut, please use a fine tooth hand saw on the face of the panel only. Then seal with 2 coats of sealer.



Fix batton to floor and silicone or 'no nails' to plinth.