

*For quality & service,
we do!*



HOTI Sanitary



Disassembling instructions for the toilet seat

Tools needed



A knife

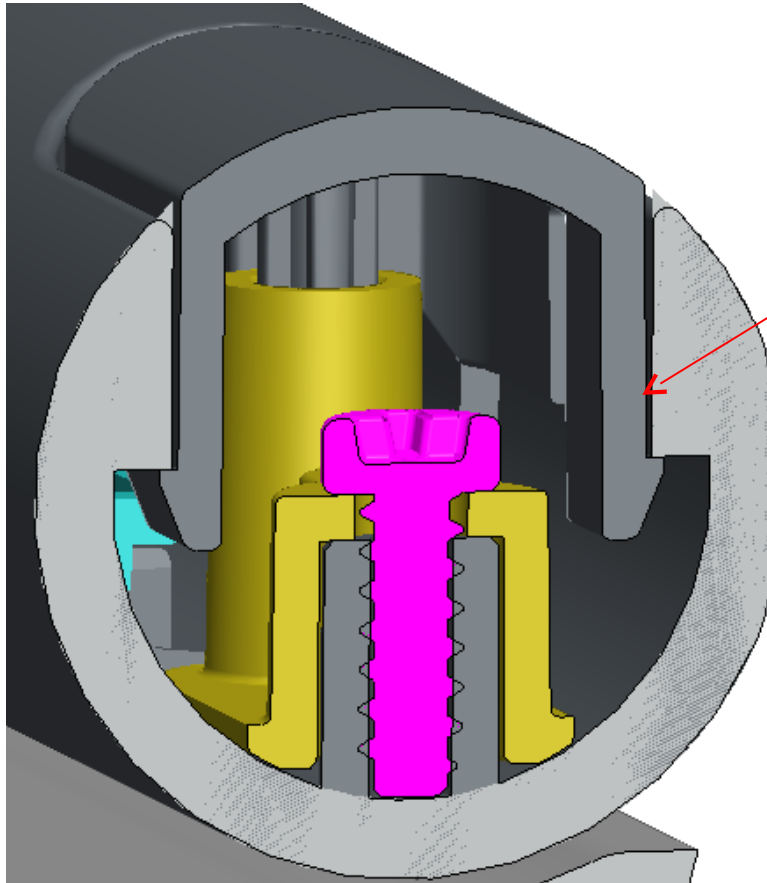
A long pin

A screwdriver

Pointed-nose pliers

*For quality & service
we do!*

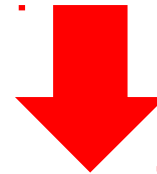
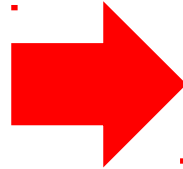
Principles of the button



The left picture shows hooks on both sides of the button, we need to release the hooks to take out the button.

*For quality & service,
we do!*

Disassembling method

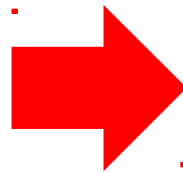


As the picture shows, insert the blade into the side gap, work along to release the hooks, then take it out by hand.



*For quality & service,
we do!*

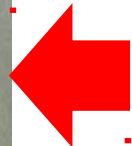
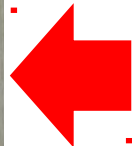
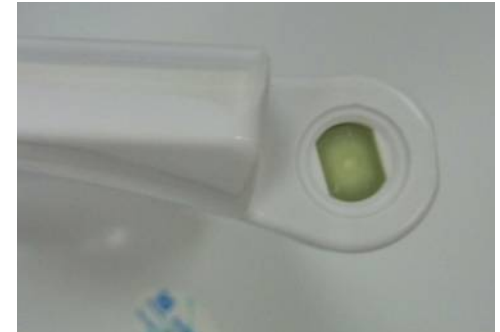
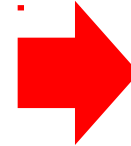
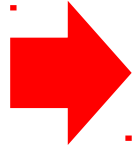
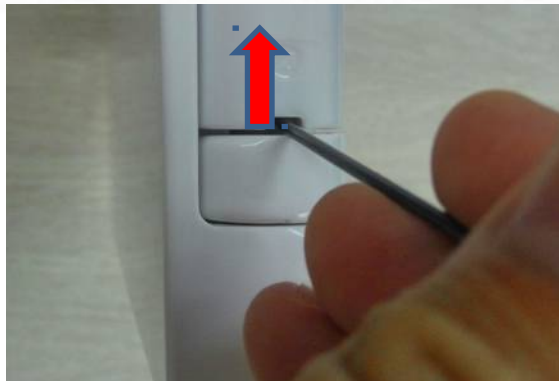
Disassemble the guide sleeve



As the picture shows, use pointed-nose pliers and screwdriver to disassemble the screw and guide sleeve.

*For quality & service,
we do!*

Disassemble the damper and tube



1. Push the two damper sides to the centre by using a long pin, this should separate the damper from the damper hole. Then, keep the toilet seat flat, and take out the cover.
2. Keep on pushing the two damper sides to the centre so the damper handle separates from the damper hole in the seat, then take out the tube.
3. Push out the connecting sets from bottom hole, and then take out the other parts.

*For quality & service,
we do!*